

# WELLFARE

## projects profile



### Touch the Sky



Right from the  
**Bay of Bengal..**  
emerging as a global player





# a real promise & a concrete word

**I** gave a word few years back. Many might have forgotten it, but I remember. One hundred real estate projects by 2013. And here it is. A ground reality. A concrete truth.

From day one – real estate and related activity was the core business pivot around which Welfare revolved. Today after 15 years of Magnum Journey and after many a profit making diversifications, it still remains our point of interest & it will continue to be, because we believe and we propagate the fact that the best investment on Earth is EARTH!



**Dr. VIJAY PRASAD MALLA**  
Managing Director, Welfare Group  
M.L.A, Visakha-West, A.P.

“Obstacles are those frightful things you see when you take your eyes off your goal.”

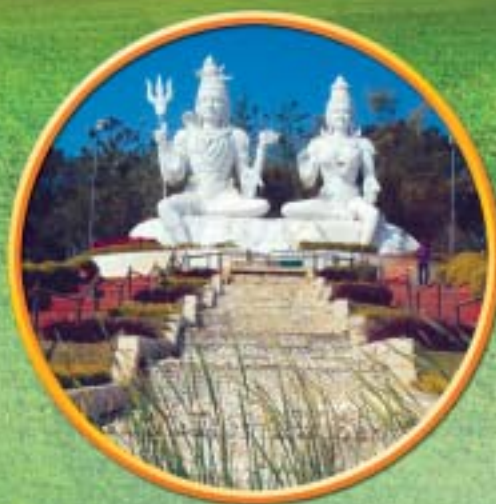






# WELFARE HEIGHTS

PEDAWALTAR, VISAKHAPATNAM



• BLOCK A SOUTH EAST VIEW



• BLOCK B NORTH WEST VIEW



• BLOCK B SOUTH EAST VIEW





The multi dimensional club house of **WELFARE HEIGHTS** with many features for A LUXURIOUS LIVING.



## SPECIFICATIONS FEATURES AMENITIES

### STRUCTURE

RCC Structure with solid blocks, table moulded bricks and cement

### DOORS

Main door

Teak wood frame covered with Teakwood architrave. Internal doors

Flush doors with veneer finish on both sides

Toilet doors with veneer finish on one side.

### WINDOWS

UPVC three track sliding windows with rainwater outflow section or aluminium powder coated / vapourised three track sliding window with rainwater outflow.

### INTERNAL WALLS / CEILING FINISH

P.O.P panned walls painted with plastic emulsion (Asian paints, Royale).

### EXTERNAL WALL FINISH

Sponge finished plaster admixed with waterproofing and painted with ICI weather shield waterproof paint or equivalent.

### FLOORING

High grade vitrified tiles.

Toilets: Anti - skid tiles for flooring, ceramic tiles for cladding.

Kitchen: Granite slab platform with stainless steel sink.

### SANITARY WARE

TOTO or equivalent make

### SANITARY FIXTURES

Jaguar or equivalent make.

### ELECTRICAL SPECIFICATIONS

Concealed conduits with copper wires and suitable points for power and lighting.

Fire resistant electrical multistrand wires of Finolex or equivalent make modular electrical switches of legrand or equivalent make.

One Earth Leakage Circuit Breaker (ELCB) for each Flat.

7 kv power supply for each Flat.

provision for dishwasher and water purifier in kitchen, washing machine and ironing in utility

### TELEPHONE / DATA CONNECTION / TELEVISION

Telephone points in living, family, kitchen and all bedrooms.

modem / internet points in all bedrooms and study area.

Cable TV points at living, family and all bedrooms.

### SAFETY AND SECURITY

panic button in master bedroom and living area.

Intra - communication facility from security room to each flat.

### LIFTS

6 passenger lifts (4 lifts for 10 floors and 2 lifts to go

2 goods lifts of Otis or kone make.

### AMENITIES

100% Vaasthu Compliant

Infrastructure is in harmony with the style and functional aspects of plant, Visitors waiting lounge Round - the -clock security.





# WELFARE TOWNSHIP

## BHAICHIGERE, ADONI ANDHRA PRADESH



Yadavagiri king ruled Adoni for several decades and in the process got popularized as Aadavni and finally as Adoni.

The transition of Adoni is spectacular and a popular pilgrim centre for many a divine powers. Mantralayam is 45 Kms away from Adoni and Ranamandala Anjaneyaswamy is the protector of this town.

It is a matter of great privilege that Goddess Amba Bhavani Temple is located very near to Wellfare Township and Sai Baba temple in an extent of 10 Acres opposite our site is a life time landmark.

- ▶ The Project is located in Survey No. 92, Bhaichigere Village, Adavani Sub Division, Kurnool Dist.,
- ▶ Director of Town & Country planning Layout (DTCP)
- ▶ 40' - 0" & 33' - 0" wide roads,
- ▶ CC Drainage
- ▶ Well developed area

DTCP  
HIGHLIGHTS

- Layout designed with open space park
- Layout will be secured
- Tree guards
- Ample ground water
- Land with clear title
- Forthcoming colonies around the project.





## Layout Plan



- Sri Mantralaya  
Raghavendra Swamy Temple



## Location Plan

Not to scale





# Welfare Sai Nagar

## ADONI, ANDHRA PRADESH

Yadavagiri Kings ruled Adoni for several decades and in the process got popularized as Aadavani and finally as Adoni. The transition of Adoni is spectacular and a popular pilgrim centre for many a divine powers. Mantralyam is 45 Kms a way from Adoni and Ranamandala Anjaneyaswamy is the protector of the town.

It is a matter of great privilege that Goddess Amba Bhavani Temple is located very near to WELFARE SAI NAGAR.

- The project is located at Survey No.568 & 571 @ Mandigiri Village, Aadhavani Mandalam, Kurnool District.
- Director of Town & Country Planning Layout (DTCP)
- 40' -0" & 33' -0" Wide Roads
- CC Drainage
- Well Developed Area

### DTCP HIGHLIGHTS

- Layout designed with open Space Park
- Layout will be Secured
- Tree Guards
- Ample Ground Water
- Land with Clear Title
- Forthcoming colonies around the site



# LAYOUT PLAN



• Sri Vyasaraja has installed nine Hanumans in all in and around Adoni



• Sri Mantralaya Raghavendra Swamy Temple

## PROJECT HIGHLIGHTS

The Project is being developed on clear title land suitable for comfortable living.

Surrounded by School & Colleges.



Not to scale

## LOCATION PLAN







# Welfare Township

## AMALAPURAM

### ANDHRA PRADESH

**REAL  
ESTATE  
PROJECT**

Amalapuram is a town in East Godavari District. It is the Head Quarters of Godavari delta named Konaseema the triangle formed by the waters of Godavari.

Kakinada and Rajahmundry are the 2 connecting cities to Amalapuram. Located in this town are the famous temples of Lord Venkateswara, Lord Subramanyeswara and Lord Chandramouli Swamy.

This town is Known for its vedic culture and equipped with beautiful coconut trees and lush greenery, it is one of the most scenic places on the planet.

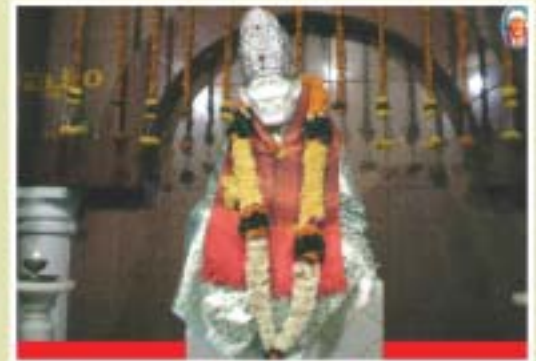
- » The project is Located at Survey No.47 & 48 @ Edarapali Village, Amalapuram Mandalam, East Godavari Dist.,
- » Well developed area
- » 40'-0" & 33'-0" Wide Roads.
- » CC Draninge
- » Forthcoming Colonies around the site

## HIGHLIGHTS

- Layout designed with open Space Park
- Layout will be Secured
- Tree Guards
- Ample Ground Water
- Land with Clear Title



# LAYOUT PLAN



Sri Sai Baba Swarna Devalayam,  
Amalapuram, Konaseema



The Symbol of Konaseema Coconut

# LOCATION PLAN



Plot for sale





# WELFARE CITY

**ANTHARAM, R.R. DIST**  
**ANDHRA PRADESH**



Antharam, Chevella mandal

Anantharam is a village and panchayat in Ranga Reddy district, AP, India. It falls under Chevella mandal. The famous temple Panchalingala located on the outskirts of the village hills/gutta. The village produced enormous scholars and well known educated people.



- ✓ The Project is located in Survey No.s 175/P, 176/P, 177/P, 178/P and 179/P(part) of Antharam Village, Chevella (M), R.R.Dist.
- ✓ Plots available in Multiples of 150, 200, 267 Sq.Yds available.
- ✓ Well Developed Area
- ✓ Wonderful Environment
- ✓ Tree Guards
- ✓ Junction point of 4 towns.

## highlights

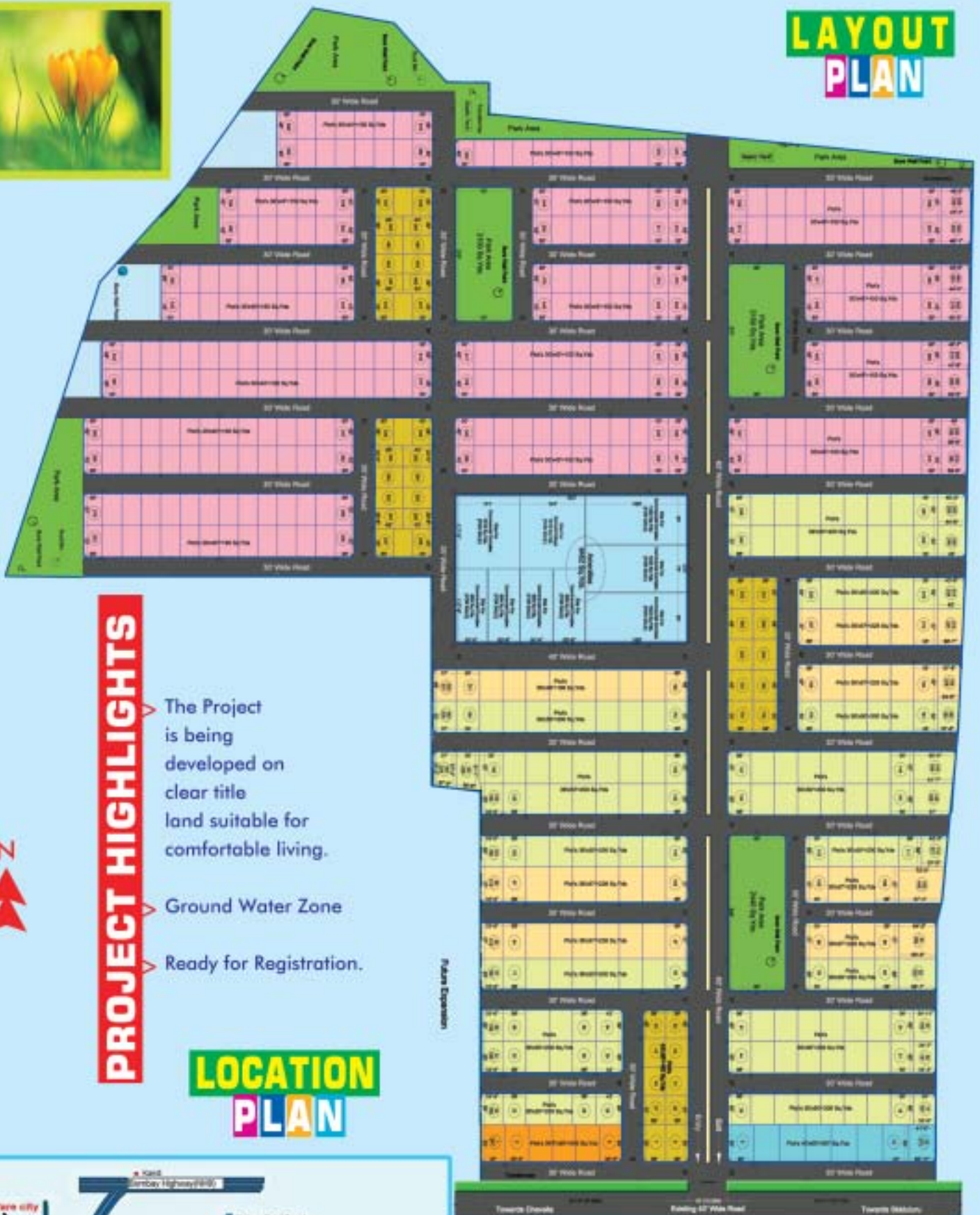
- ▶ Plenty of Ground Water.
- ▶ Clear Title Land.
- ▶ Ready for Registration.
- ▶ Forthcoming Colonies around the site .







# LAYOUT PLAN



## PROJECT HIGHLIGHTS

- The Project is being developed on clear title land suitable for comfortable living.
- Ground Water Zone
- Ready for Registration.

## LOCATION PLAN



EXISTING ROAD 40'-0" WIDE







# WELFARE TOWNSHIP

## BAPATLA ANDHRA PRADESH



A sip of the tasty Badam Milk of Bapatla will linger on your taste buds for a long time-thus reminding the Goodness of this place. Being an Educational hub in Guntur Dist. Bapatla boasts off with 12 High-Tech Colleges including Engineering and Agriculture Institutions.

The Ancient Bhavanarayana Temple is popular among the locals as they consider lord Vishnu as their protector. When it comes to Wellfare Project, the site is situated conveniently within reach of Reach Hospital and Holycrafts English Medium High School. So grab the opportunity of your life time.

- » The Project is located in Survey No.s 357P, 359 Pat Karlapalam Village, Bapatla.
- » Well developed area.
- » 40'-0" & 33'-0" Wide Roads.
- » CC Drainage
- » Forthcoming colonies around the site.

- ◆ Layout designed with open space park.
- ◆ Layout will be secured.
- ◆ Tree Guards.
- ◆ Ample ground water.
- ◆ Land with clear title.

# HIGHLIGHTS



MAIN ROAD

## LAYOUT PLAN

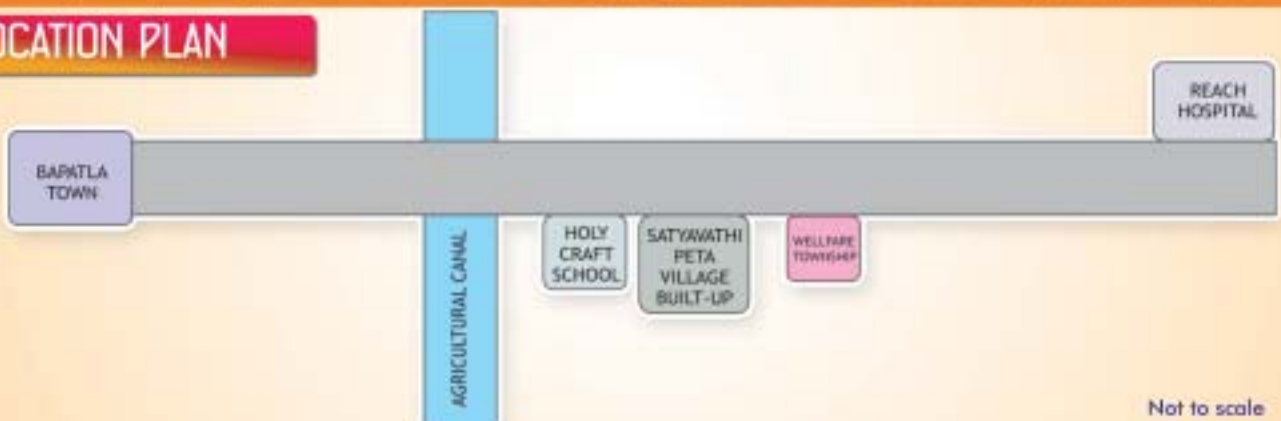


. Suryalanka Beach:  
Beautiful Holiday Spot

. Bapatla Women's Engineering College



## LOCATION PLAN



Not to scale





# Welfare Township

## BHOGAPURAM

### ANDHRA PRADESH

**REAL  
ESTATE  
PROJECT**

Bhogapuram is a hot spot project located adjacent to the N.H.5 (Vizag - Srikakulam National Highway), close to the Gum City, Software Companies, Engineering Colleges and also several surrounding Residential Townships. With the new roads planned by the Government from beach road to other areas, the growth at Bhogapuram has taken a Gaint leap particularly towards National Highway - 5. Almost a Dozen Engineering & Three International Schools are enrooted Bhogapuram. Well a deal with this destination through Welfare Township; The best beyond doubt.

- » The project is Located at Survey No. 112, 113P, 114P & 115 @ Bhogapuram Village & Mandalam, Vizianagaram District.
- » Director of Town & Country Planning Layout (DTCP)
- » 40'-0" & 33'-0" Wide Roads.
- » CC Drainage
- » Well Developed Area

### DTCP HIGHLIGHTS

- Layout Designed with open space park
- Layout will be secured
- Tree Guards
- Ample ground water
- Land with clear title
- Forthcoming colonies around the site



# LAYOUT PLAN



Gum City near bhogapuram  
fully residential zone

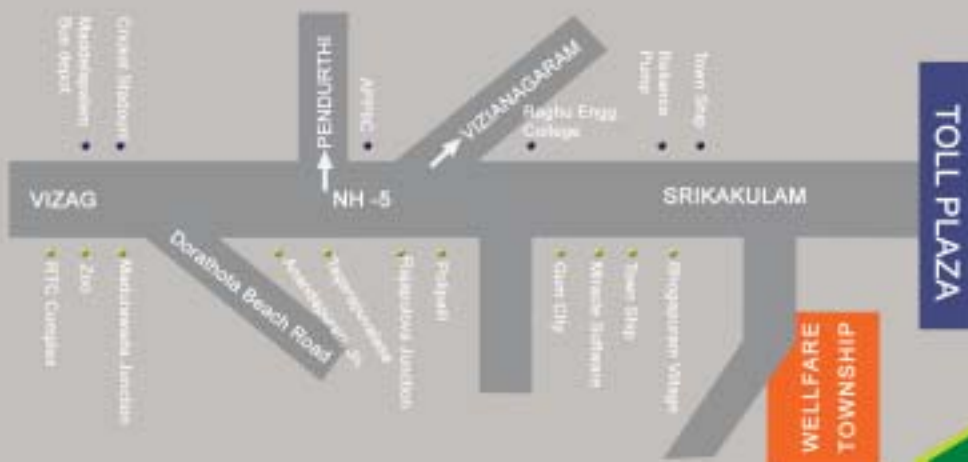


Miracle Software Systems



## PROJECT HIGHLIGHTS

- Project Highlights  
The Project is being developed on clear title Land suitable for comfortable living.
- Ready for Registration



Not to scale

# LOCATION PLAN



# Welfare Township

GADWAL  
ANDHRA PRADESH



Gadwal is a city and a municipality in Mahbubnagar district in the state of Andhra Pradesh, India. It is located 188 km from Hyderabad, the state's capital.

Gadwal is known for its world famous handloom jari sarees ("Gadwal Sarees").

One of Gadwal's most notable landmarks is the large dam currently under construction as the Priyadarshini Jurala Project, with almost 72 gates.

Gadwal was once ruled by a king Named Somashekar Ananda Reddy and there is a famous fort from his era. Gadwal also has Sri Jamla Devi temple, Considered a divine place by many local residents.

## highlights

- | The Project is located at Survey No.883 & 884@ Gadwal Grama Panchaithi, Gadwal, Mahabubnagar District.
- | Director of Town & Country Planning Layout (DTCP)
- | 40'-0" & 33'-0" wide roads.
- | CC Drainage
- | Well developed surrounding areas.
- | Layout designed with open space park
- | Layout will be secured
- | Tree guards
- | Ample ground water
- | Land with clear title
- | Forthcoming colonies around the project



## Layout Plan



. Gadwal City view

## PHASE - 1



## PHASE - 2

## Location Plan



. Gadwal Rly. Stn.





Kamareddy (KMR) is one of the largest business Houses in Nizamabad district in the Indian State of Andhra Pradesh.

And has Produced many business men of great acumen. Chatla Group (a type of Cigarette) industry located in Kamareddy.

Kamareddy has very famous temples to see, like Panchamukhi Hanuman Temple, Ayyappa Swamy Temple, Sai Baba Temple, Meher Baba Temple, Ramalayam (Vivekananda Colony), Ganga Amma Temple Which is beside the Kamareddy pond (Cheruvu) and much more. (Vemulawada Raja Rajeshwara Swamy Temple). Kamareddy has very famous Masjids and Madarsa.

## DTCP HIGHLIGHTS

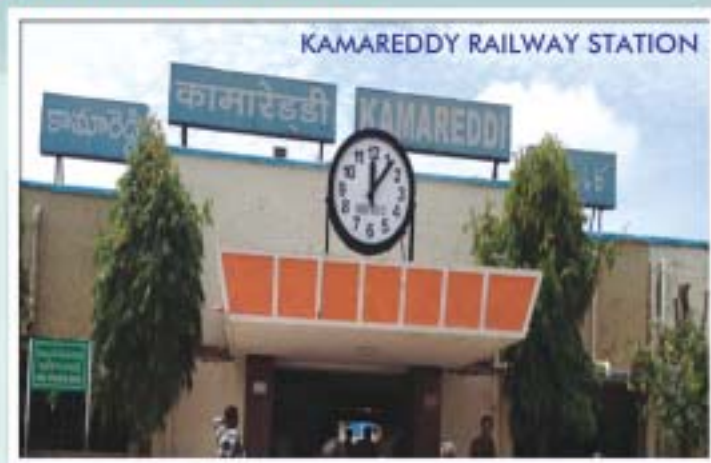
- » The project is Located at Survey No.433/1 @ Adloor Village, Kamareddy Mandalam, Nizamabad District.
- » Director of Town & Country Planning Layout ( DTCP)
- » 40'-0" & 33'-0" Wide Roads.
- » CC Drainage
- » Well developed Surrounding areas
- Layout designed with open space park
- Layout will be secured
- Tree guards
- Ample ground water
- Land with clear Title
- Forthcoming colonies around the project





## PROJECT HIGHLIGHTS

- The Project is being developed on clear title
- Land suitable for comfortable living.
- Near Railway Station.
- Tree Guards & Roads.
- Ground Water Zone.
- Ready for Registration.







# Welfare Township

**KANIGIRI**  
**ANDHRA PRADESH**

**REAL ESTATE PROJECT**



Kanigiri (Rockcity) is a moderate town and it is famous in history as it was ruled by King kaatam Raju. King Kaatam Raju has constructed Lord Siva Temple on top of the Kanigiri Hills. The nearest railway line is Singarayakonda which is about 62 Km from Ongole.

## DTCP HIGHLIGHTS

- » The Project is located at Survey No.572,576 & 590/C and machavaram Village & panchayathi, Kanigiri Mandalam, Prakasam Dist.,
- » Director of Town & Country planning Layout (DTCP)
- » 40'-0" & 33'-0" wide roads.
- » CC Drainage
- » Well developed surrounding areas.

Layout designed with open space park

Layout will be secured

Tree guards

Ample ground water

Land with clear title

Forthcomming colonies around the Project.



## LAYOUT PLAN



. ABR College of Education



• Kanigiri Hills

WELFARE OFFICE

ONGOLE ROAD

KANDUKURU ROAD

## PROJECT HIGHLIGHTS

- The Project is being developed on clear title
- Land suitable for comfortable living.
- Ground Water Zone
- Ready for Registration

## LOCATION PLAN

WELFARE  
TOWNSHIP  
KANIGIRI

What the scales





# Welfare Township

## NAIDUPETA - ANDHRA PRADESH

The Eastern Wing of Golden Quadri-lateral National Highway (NH5) passes through the outskirts of Naidupeta town. It is located on the banks of the Swarnamukhi river. It is fifth largest town in the district. This place is junction to Chennai, Venkatagiri, Nellore and Tirupathi. From here, Chennai is about 106km by road 66km to Tirupathi, 35km from Venkatagiri, 68 km from Nellore. Due to its pivotal location advantage, Prominence of Naidupeta is on the upbeat.

### dtcp highlights

- | The Project is located at Survey No.33P, 34P, 35 & 36P@ Thummuru Village, Naidupeta Mandalam, Nellore District.
- | Director of Town & Country Planning Layout (DTCP)
- | 40'-0" & 33'-0" wide roads.
- | CC Drainage
- | Well developed surrounding areas.

- | Layout designed with open space park
- | Layout will be secured
- | Tree guards
- | Ample ground water
- | Land with clear title
- | Forthcoming colonies around the project



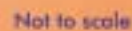


## Layout Plan



• Near Swarnamukhi River Tirumala Tirupati.  
This is the holy river flowing round.

## Location Plan



Not to scale





**REAL  
ESTATE  
PROJECT**

# WELLFARE TOWNSHIP

**NELLORE, KANTEPALLI - ANDHRA PRADESH**

Nellore is a city located in the state of Andhra Pradesh, India. It is the headquarters of the Potti Sriramulu Nellore District, formerly known as Nellore District. It is of strategic commercial importance as it lies between the cities of Vijayawada and Chennai. It is located on the banks of the Penna River. Nellore is also famous for its production of Mico (Gudur), Lemon (Gudur) and Agricultural Products such as rice and it is also famous for other temples like Narasimha Swamy Konda, Jonnavada Kamakshi Ammavari Temple, Ayyappa Temple, Golagamudi Venkyaswami Temple.

Nellore is also known for aqua culture.

## DTCP HIGHLIGHTS

- The project located at Survey No. 236, 237, 238, 239P, 241P, 242, 243P, 244P & 245P Kantepally Village, Nellore Dist.
- Director of Town & Country Planning Layout (DTCP)
- 40'-0" & 33'-0" Wide Roads.
- CC Drainage
- Well developed surrounding areas.



- Layout designed with open space park.
- Layout will be secured.
- Tree guards.
- Ample ground water.
- Land with clear title.
- Forthcoming colonies around the projects.



## LAYOUT PLAN



## PROJECT HIGHLIGHTS



Nec-nellore



Ratnagiri Rangaswamy Devasthanam

The Project is being developed on clear title land suitable for comfortable living.

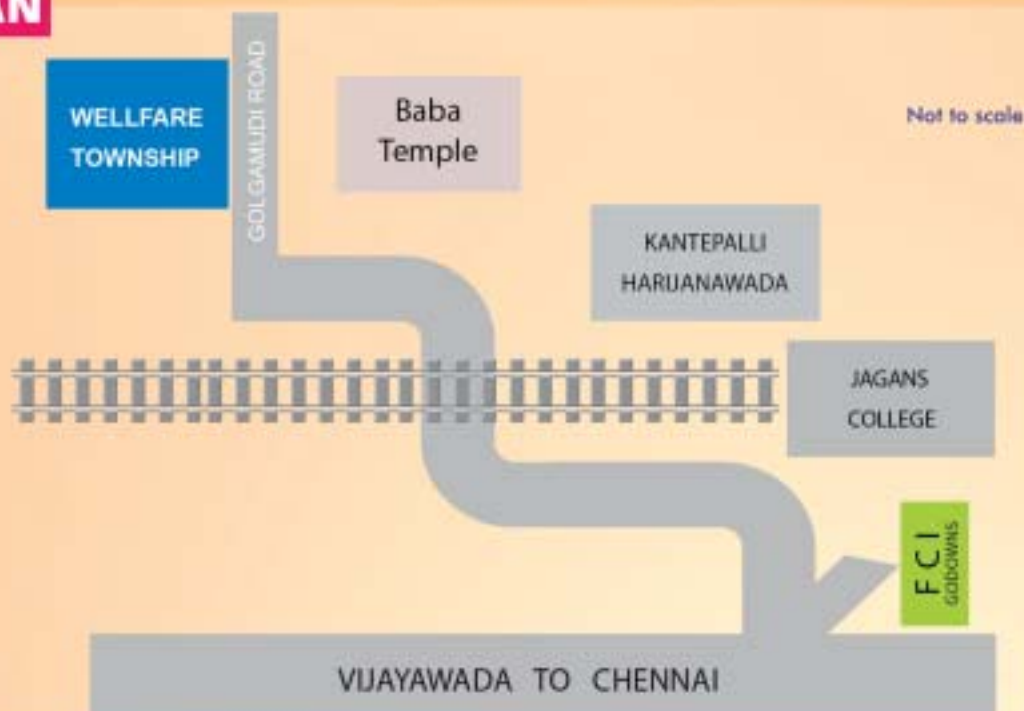
Surrounded by Schools & Colleges.

Tree Guards & Roads.

Ground Water Zone.

Ready for Registration.

## LOCATION PLAN







# Welfare Township

ONGOLE ANDHRA PRADESH

REAL  
ESTATE  
PROJECT

Ongole is one of the major centres for Tobacco Trading in A.P.  
Ongole is famous for the breed bulls in that area. Ongole is the District Head Quarters of Prakasam.  
The discovery of the Black Galaxy Granite has resulted in the rise of Granite Mining,  
Stone Polishing units and stone cutting companies around Ongole.

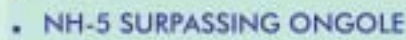
- ▶ The Project is located at Survey No. 459/1A & 1B @ Vallooru Village, Ongole Sub Regd., Prakasam District.
- ▶ Direct of Town & Country Planning Layout (DTCP)
- ▶ 40'-0" & 33'-0" Wide Roads.
- ▶ CC Drainage.
- ▶ Well developed surrounding areas.



## DTCP HIGHLIGHTS

- Layout designed with open space park.
- Layout will be secured.
- Tree guards.
- Ample ground water.
- Land with clear title.
- Forthcoming colonies around the projects.





- ✔ The Project is being developed on clear title land suitable for comfortable living.
- ✔ Good Development.
- ✔ Ready for Registration.

**LOCATION PLAN**

Sunnedy Palam Railway Station

I. O. C.

1 K.M.

2 K.M.

Orissa To Nalanda

N.H. - 5

Colony

Waste Site

Dank

Tanda

S

Not to scale





# Welfare Township

**PULIVENDULA ANDHRA PRADESH**

It is a fast developing the most popular town in Kadapa District.  
 (Late) Dr. Y.S. Rajasekhara Reddy, the former Chief Minister of A.P.  
 was elected as MLA for 4 times in succession from this constituency only.  
 Commercial crops like Sunflower, Ground Nuts, Banana, Sweet-lemon  
 are exported to the States of Assam, Maharashtra, Tamilnadu & Karnataka.  
 The town's main drinking water resource is Chitravathi Dam, Parnapalli.



## HIGHLIGHTS

- » The Project is located at Survey No. 46 @ Ahobilapuram Village, Pulivendula Mandalam, Kadapa District.
- » Direct of Town & Country Planning Layout (DTCP)
- » 40'-0" & 33'-0" Wide Roads.
- » CC Drainage.
- » Well developed surrounding areas.

- » Layout designed with open space park.
- » Layout will be secured.
- » Tree guards.
- » Ample ground water.
- » Land with clear title.
- » Forthcoming colonies around the projects.



# LAYOUT PLAN



• Pulivendula Entry



• Raja Reddy Park

➤ The Project is being developed on clear title land suitable for comfortable living.

➤ Ground Water Zone

➤ Ready for Registration.

**PROJECT HIGHLIGHTS**



Not to Scale



# WELFARE TOWNSHIP

**TADIPATRI - ANDHRA PRADESH**



Tadipatri got its name from garden of palm trees.  
Tadipatri has 2 very famous temples within the town.  
Chintala Venkata Ramana Swamy Temple  
and Bugga Rama Lingeswara Swamy Temple.  
Black Stone Polishing Industries are located in Tadipatri.

Tadipatri is about 55 KM from Anantapur.

In the recent times, Tadipatri has registered  
wonderful growth in all aspects.

## HIGHLIGHTS

- The Project is located at Survey No. 129E, F & G @ Hussanpuram Village, Tadipatri Mandalam, Anantapuram.
- Director of Town & Country Planning Layout (DTCP)
- 40'-0" & 33' Wide Roads.
- CC Drainage.
- Well development surrounding areas.

- Layout designed with open space park. ✓
- Layout will be secured. ✓
- Tree guards. ✓
- Ample ground water. ✓
- Land with clear title. ✓
- Forthcoming colonies around the projects. ✓



AGL DRY LANDS



# LAYOUT PLAN



TADIPATRI ENGINEERING COLLEGE



BUGGA RAMA LINGESWARA SWAMY TEMPLE

## PROJECT HIGHLIGHTS

The Project is being developed on clear title land suitable for comfortable living.

Wonderful Environment.

Ready for Registration.

# LOCATION PLAN



Not to Scale





# WELFARE TOWNSHIP



## TENALI - ANDHRA PRADESH

Tenali, is a town and a mandal in Guntur District of Andhra Pradesh, South India. It is located 16 miles East of Guntur City. Three canals of the Krishna River flow through Tenali making it a part of the rice bowl of Andhra Pradesh. One of the canals is navigable up to Nizampatnam Port. Tenali is a major railway junction connecting Guntur, Vijayawada, Repalle and Chennai.



- » The Project is located at Survey No. 416, 417/1 & 417/8 Pedharavur Village, Tenali Sub Division, Guntur Dist.
- » 40'-0" & 33' Wide Roads.
- » CC Drainage.
- » Well developed surroundings.

## HIGHLIGHTS

- Layout designed with open space park. ✓
- Layout will be secured. ✓
- Tree guards. ✓
- Ample ground water. ✓
- Land with clear title. ✓
- Forthcoming colonies around the projects. ✓



## LAYOUT PLAN



• Railway Station



• Tenali Market

## PROJECT HIGHLIGHTS

- The Project is being developed on clear title land suitable for comfortable living.
- Ground Water Zone
- Ready for Registration.



## LOCATION PLAN





## Welfare Township

### TANUKU - ANDHRA PRADESH

Tanuku, earlier known as a Tarakapura, the word comes from Tarakasena, a great ruler who ruled over the Tanuku and its covering regions.

Tanuku is the town and municipality situated in West Godavari district of the state of Andhra Pradesh. Presently it is the political capital of West Godavari district. It is rarely known that this place has its own corner in India and it is once engaged in producing and supplying of UDMH-MMH (Monomethylhydrazine), the liquid rocket fuel. The Mullanpudi and Chittruri families have been well known within the region of Tanuku for various generations.

### dtcp highlights

- | The Project is Located at Survey No. 629p & 630 @ Tanuku Village & Municipality, West Godavari District.
- | Director of Town & Country Planning Layout (DTCP)
- | 40'-0" & 33'-0" wide Roads.
- | CC Drainage
- | Well developed surrounding areas.

- | Layout designed with open space park
- | Layout will be secured
- | Tree guards
- | Ample ground water
- | Land with clear title
- | Forthcoming colonies around the project



## Layout Plan



## Location Plan



• Tanuku Railway Station





# WELLFARE TOWNSHIP

## URAVAKONDA - ANDHRA PRADESH

Uravakonda is a census town in Anantapur District in the Indian State of Andhra Pradesh. Actually Uravakonda is very beautiful place because of it is having a big stone situated in the center of the town. This covers nearly 100 villages. It is famous for weaving industry specially silk handloom or silk weaving industry. It is politically active place. A historical place like Pennahobilam is near Uravakonda at a distance of 10 kilometres. UKD is well connected to district headquarters Anantapur (52 KM) and Bellary (Karnataka, 55 KM) by Road.

- » The Project is located at Survey No. 579A & 579B Bellari Road Steet at Uravakonda Town, Ananthapuram Dist.
- » Director of Town & Country Planning Layout (DTCP)
- » 40'-0" & 33' Wide Roads.
- » CC Drainage.
- » Well develped area.

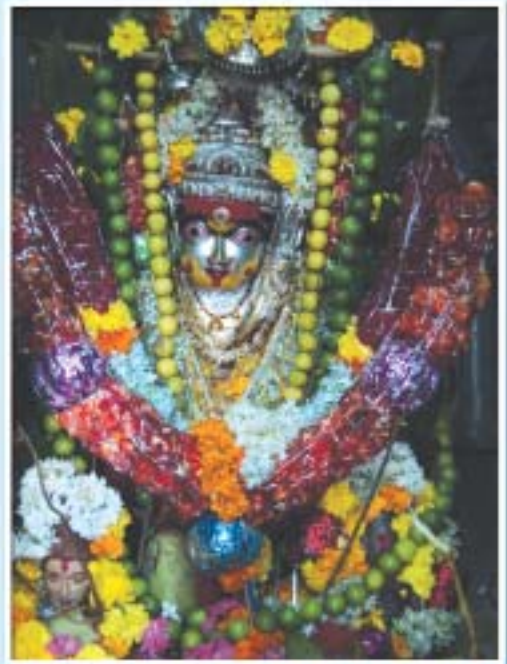
### HIGHLIGHTS

- Layout designed with open space park. ✓
- Layout will be secured. ✓
- Tree guards. ✓
- Ample ground water. ✓
- Land with clear title. ✓
- Forthcoming colonies around the projects. ✓





## LAYOUT PLAN



• DEVANGA SRI CHOWDESWARI  
DEVATHA URAVAKONDA



• Uravakonda Stone Hill

## PROJECT HIGHLIGHTS

- The Project is being developed on clear title land suitable for comfortable living.
- Ground Water Zone
- Ready for Registration.

## LOCATION PLAN



Not to Scale





# WELFARE TOWNSHIP

## YEMMIGANUR - ANDHRA PRADESH



Yemmiganur is Mandal Head Quarters and a Municipality in Kurnool District.

There is also a Famous Darga visited by all religious.

Yemmiganur is much developing mainly in the field of education and employment. The place having good drinking water facilities. Through ample water resources.

- The Project is located at Survey No. 172B, 173, 174A & 175B1 Kalugotla Village, Yemmiganur Mandalam, Kurnool.
- Director of Town & Country Planning Layout (DTCP)
- 40'-0" & 33' Wide Roads.
- CC Drainage.
- Well developed area.



### HIGHLIGHTS

- Layout designed with open space park. ✓
- Layout will be secured. ✓
- Tree guards. ✓
- Ample ground water. ✓
- Land with clear title. ✓
- Forthcoming colonies around the projects. ✓



## LAYOUT PLAN



. Theatre in Yemmiganur

## PROJECT HIGHLIGHTS

- The Project is being developed on clear title land
- Suitable for comfortable living.
- Ground Water Zone
- Ready for Registration.

## LOCATION PLAN

Not to scale







# Wellfare Township

## CHIRALA

### ANDHRA PRADESH

REAL  
ESTATE  
PROJECT

Chirala is one of the largest towns of Prakasam Dist., Earlier known as " Small Bombay" beacuse of the varieties of sarees that they produce.

Chirala is a very good education hub.

Chirala is a major commercial center between Ongole and Tenali and lies on the main Railway lane between Chennai and Vijayawada. Perfect location for a sure fire growth factor.

- » The project is located at Survey No. 55/1, 2, 3, 4, 5, 6 @ Kotthapeta Village, Vetapalem Manadalam, Chirala.
- » 40'-0" & 33'-0" Wide Roads.
- » CC Drainage
- » Underground Cable Electricity

## HIGHLIGHTS

- Land with Clear Title
- Layout will be Secured



# LAYOUT PLAN

## PROJECT HIGHLIGHTS



. Chirala Station

- The Project is being developed on clear title
- Land suitable for comfortable Living.
- Tree Guards
- Ground Water Zone
- Ready for Registration



Not to scale



# LOCATION PLAN





# Welfare Township

**SATHUPALLI - ANDHRA PRADESH**



Sathupalli is an assembly constituency in Khammam District of Andhrapradesh.

100 KM from Vijayawada and 279 KM from Hyderabad. It is one of the major towns in the Khammam District in India. So named because it is the combination of seven (Saath) Villages. It includes the Singareni coal-mines and also a valuable forest area which is rich with many plants. It is nearly 78 KM from Khammam.

- » The Project is located at Survey No. 135E, 135AA/1@ Siddaram Village, Sathupalli Mandalam, Khammam District.
- » Surrounded by Schools & Colleges.
- » Ground Water Zone.
- » Ready for Registration.

## HIGHLIGHTS

- Layout will be secured. ✓
- Tree guards. ✓
- Ample ground water. ✓
- Land with clear title. ✓
- Forthcoming colonies around the projects. ✓



# LAYOUT PLAN



Sri Kanaka  
Durgammavari  
Temple,  
Chogallu Nearest

369'-6"



492'-3"

# LOCATION PLAN



## PROJECT HIGHLIGHTS

- The Project is being developed on clear title land suitable for comfortable living.
- Ground Water Zone
- Ready for Registration.



# Welfare Township

KAVALI, MUSUNURU

ANDHRA PRADESH

Kavali is a town and a municipality in Sri Potti Sriramulu, Nellore Dist., on the east coast of India is the state of AP on NH-5. It is positioned on the grand trunk road and the east coast railway track. Both of which connect Chennai and Kolkata helped it's growth more than the other towns in the Nellore District.

Very famous for cloth business, Kavali known as second Mumbai market.

Kavali registered an allround growth the to its commercial & trade floating. The land prices in this town are touching a new high in the recent times.



## highlights

- ✓ The Project is located at Survey No. 837/1-2 @ Musunuru Village, Kavali, Nellore District.
- ✓ 21 Anakanas Plots available.
- ✓ Clear Title land and immediate Registration.
- ✓ Full Ground Water.
- ✓ 10 Min. drive from bus stand.





Front Elevation of Kavali Railway Station



Kavali Town







# WELFARE RAGHAVENDRA ESTATES

**KAVALI**  
ANDHRA  
PRADESH

Kavali is the business head quarter of Nellore District which is also known as the "Andhra Mumbai" for its Biggest Textile Market. Most IAS & IPS Officers of the State hail from Kavali and many a leader grown bigger from this town. The presence of engineering and B.Ed. Colleges, Nellore and Singarayakonda on either side makes Kavali the centre point of prime activity.

## *highlights*

- Plenty of Ground Water
- Clear Title Land
- Forthcomming Colonies around the site.
- The Project is located in Survey No.s 890, 891, 892, 893, 894, 895, 896, 897, 898, 900 Budamgunta Panchayat.
- Plots available in Multiples of 40'x72' (6.66 Cents), 40'x36' (3.33 Cents), 40'x54' (5.00 Cents)
- Well developed area.
- Wonderful Environment.
- Roads & Drains shall be proved
- Tree Guards.



## Layout Plan



Not to scale



Sivalayam

## Location Plan

Rajeev Gruhakalpa

Welfare  
Raghavendra  
Estates

Arch

Asta Laxmi  
Baba Temple

Vengal Rao Nagar  
Shiva Temple Street

Shiva  
Temple

Udaygiri Road

Jawahar  
Bharathi Degree  
College



Sivalayam





# Wellfare Township

## NANDYALA - ANDHRA PRADESH

Nandyala is surrounded by  
Nine Lord Shiva Temples -  
maha Nandi is being the  
famous of the lot.

The flow of pilgrims is an  
every day affair of

Nandyala and particularly during  
mahashivaratri the flow of the  
devotees is quite high.

Due to the presence of  
Nallamala Forest range

Nandyala is popular Geographically  
as well and movie cameras often catch  
the grandure of this green expanse.

Wellfare Township at Nandyala is  
truly a nice place to live on for life.

- ▶ The Project is located in Survey no.s 461,462,  
Udumulpuram Panchyat, Nandyala Dist.,
- ▶ 40'-0" & 33'-0" wide Roads.
- ▶ CC Drainage
- ▶ Well developed area

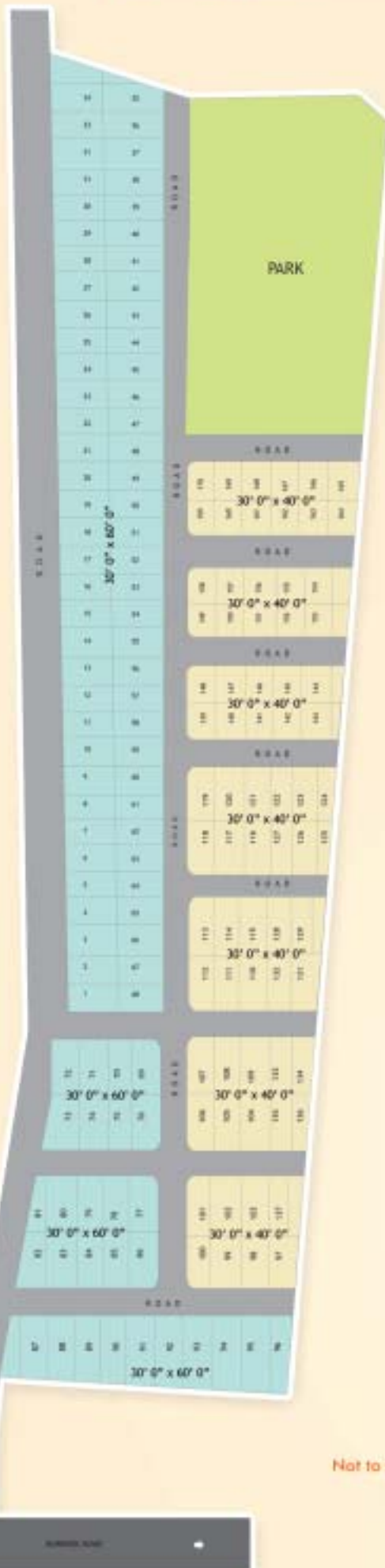


- ▶ Layout designed with open space park
- ▶ Layout will be secured
- ▶ Tree guards
- ▶ Ample ground water
- ▶ Land with clear title
- ▶ Forthcoming colonies around the Project.

## HIGHLIGHTS



## Layout Plan



## Project Highlights

The Project is being developed on clear title land suitable for comfortable living.

Ground Water Zone

Ready for Registration

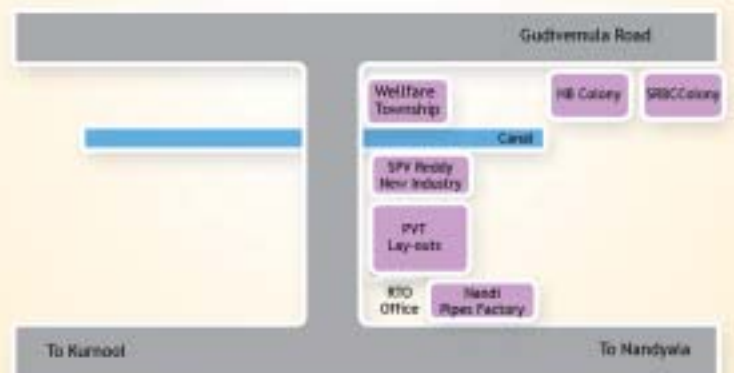


. The huge nandi statue



.Srisailem Temple, Srisailem Nearest Railhead - NANDYALA

## Location Plan



Not to scale





# WELFARE TOWNSHIP

N A R S I P A T N A M

A N D H R A P R A D E S H

- ▶ The Project is located at Survey No. 41/1, Tamaram Village, Makavarapuram Mandalam, Kotavuratla, Visakhapatnam.
- ▶ Surrounded by Schools & Colleges.
- ▶ 200sq.yds (30'x60'), 167 Sq. yds (30'x50').
- ▶ 100 Sq.Yds (22'6"x40'0") Plots Available.

## HIGHLIGHTS

Narsipatnam or Narsipattanam is a census town in Visakhapatnam district in the Indian state of Andhra Pradesh. Alluri Sita Rama Raju a famous freedom fighter started his freedom struggle from this place only. Near by Narsipatnam a hill Known as Ballighatham located on the bank side of the lake "Uththaravahini" is the home of rich indian culture, tradition and famous for temples of goddess lakshmi and Lord shiva.

- ▶ Ground Water Zone.
- ▶ Ready for Registration.



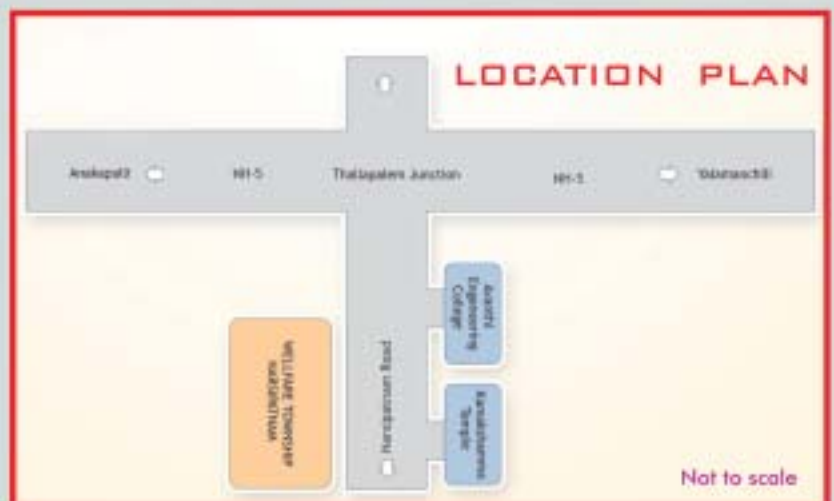
# LAYOUT PLAN



• SRI ALLURI SITARAMA RAJU CREMATION PLACE



• Narsipatnam Road Rly. Station







# wellfare township

## NIZAMABAD

ANDHRA  
PRADESH

Nizamabad was formerly known as Induru and Indrapuri. It was ruled by the king Indra Vallabha Panthya Varsha Indra Som, of the Rashtrakuta Dynasty, in the 8th century, and took its name from him. In 1905 the railway line between Secundrabad and Manma was constructed. The railway station was named after then ruler of the Nizam state Nizam-ul-Mulk as Nizamabad. The railway line connects Hyderabad and Mumbai. It is like North-South corridor. Has the distance of 161 km (100 mi) from Hyderabad and 640 km (400 mi) from Mumbai.

Nizamabad is in the north of Andhra Pradesh in the district of Nizamabad. It has many towns like Bodhan, Armuru, amareddy and Banswada, In Bodhan town there is Nizam Sugar Factory. In early years it was the biggest in the Asian continent. Bodhan is a town with a mixture of people from many cultural and religious backgrounds, consisting primarily of Hindus, Sikhs and Muslims as well as Christians and other religious communities. Famous people like Mirza Ejaz Ahmed Baig[who?] who currently lives in london hail from Nizamabad. Once it was the capital at the time of the Rashtrakuta Empire.

### HIGHLIGHTS

- || The project is located at Survey No's 529/Ø , 529/ Ø , 532, 545, 546, 547, 548 of Nizamabad shivar, Mandal & Dist. Nizamabad
- || Clear title land and immediate Registration.
- || Tree Guards & Roads.
- || Full Ground Water.
- || Near Bus Stand & Market.
- || Near By Schools & Colleges.



40'-0" WIDE ROAD

## LAYOUT PLAN

40'-0" WIDE ROAD

10 9 8 66 67 68

40'-0" WIDE ROAD

62 61

19 57 58 59 60

40'-0" WIDE ROAD

28 29 30 31 56 55 54

36 35 34 33 32 52 53 53/1

40'-0" WIDE ROAD

51 50 49 48 47 46

41 42 43 44 45

40'-0" WIDE ROAD

82 82/1

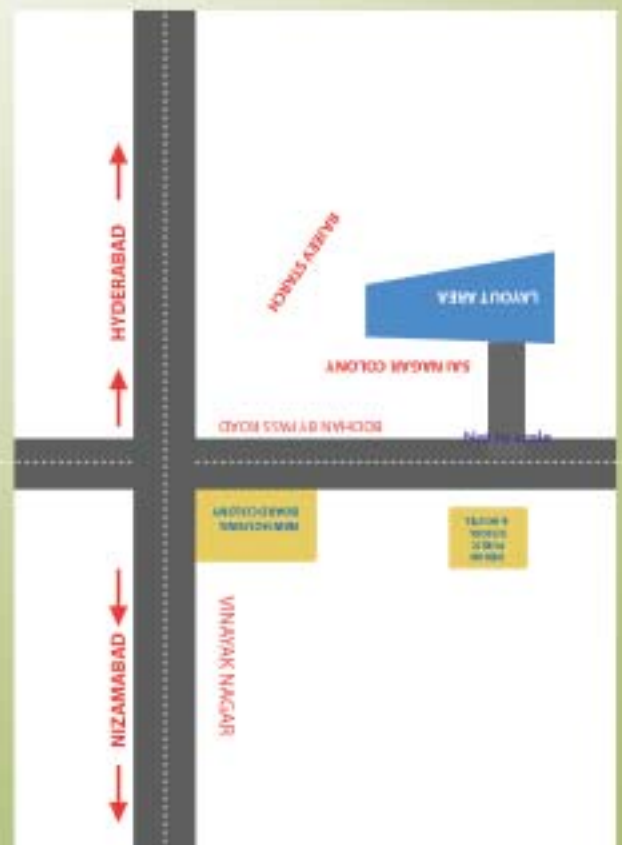
82/2

## PROJECT HIGHLIGHTS

The Project is being developed on clear title,  
land suitable for comfortable living,  
Ground Water Zone, Ready for Registration.



## LOCATION PLAN







# **WELFARE TOWNSHIP**

## **AMANCHARLA NELLORE ANDHRA PRADESH**



Amancharla is a mid sized village located in the district of Nellore in the state of Andhra Pradesh in India. It has a population of about 4145 persons living in around 1072 households.

Amancharla - Andhra Pradesh Pincode is 524345, Headoffice of this Post Office is Gudur H.O This Post Office is located in Podalakur Taluk of Nellore District. Amancharla B.O Post Office is under Gudur Division Vijayawada Region Andhra Pradesh Circle. Phone Number of this post office is Not Available. Pincode is the postal coding system used by the Department of Posts, India. Click on the 6-digit pin code for list of Post Offices/ Areas covered and to view geographic location.

### **HIGHLIGHTS**

- The project is located at Survey No. 176 & 428, Patta No. 433, Amancharala Village & Panchayathi, Amancharala Majara goturi vari Kandiriga Village, Sree Pottisriramulu Nellore Dist.
- Surrounded by Schools & Colleges
- Ground Water Zone
- Ready for Registration



## LAYOUT PLAN

-----To City Garden Mannararappadu ----

**LAYOUT PLAN**  
-----TO MANNAVARAPPADU----- WIDE B.T ROAD-----



LAY-OUT



NELLORE



AAMANCHERLA (MANAVARAPPADU LAYOUT)



## HIGHLIGHTS

From RTC complex to layout T2 K.M  
Near by Airport Roadside Centre  
Proposed Podalaku  
Railway Station  
Existing 150' road  
towards Rajur  
Nallure in future compare with Singapore City  
Nallure City limits

Not to scale

Not to scale

# LOCATION PLAN





# Balaji Enclave

GOPALAPATNAM, VIZAG  
ANDHRA PRADESH



Gopalapatnam is at Western side of the city of Visakhapatnam. In about 1942, Sri Gopala Raju - a wealthy man used to live in the area whose name was put for the area. He used to rule Kotagutta, enugula Dwaram, Gurrula Cheruvu, Taati Penda areas which were united to form the present Gopalapatnam.

Gopalapatnam is a big business center. One can find almost all kinds of Malls - The deity of Gopalapatnam is their local goddess (Grama Devatha) - Juvvalamma.

- » The project is located at Survey No.4/A8, Gopalapatnam, Vizag
- » 2 Bedroom Flats Available
- » Clear title land and Ready to occupy.
- » Full Ground Water
- » All flats are aesthetically designed with 100% as per vaastu
- » Schools, Markets, Colleges, Temples & Various Public Amenities are within easy reach.

## HIGHLIGHTS



## Typical Floor Plan



• Vizag BRTS Road



• Lakshmi Narasimha Swamy Temple



Flat No.s	Flat Area
A	910
B	910
C	600
D	635
E	620
F	660
G	1015
H	1015

## AREA STATEMENT

Not to scale





# Welfare Paradise

**SHEELANAGAR**

**VISAKHAPATNAM**

**ANDHRA PRADESH**

## HIGHLIGHTS

The project is located at Survey No.103, Thunglam Village, Sheelanagar, Vizag

2 Bedroom Flats Available

Clear title land and immediate Registration.

Full Ground Water

Near Air Port

Near Ayyappa Swamy Temple

All flats are aesthetically designed with 100% as per vastu

Schools, Markets, Colleges, Temples & Various public Amenities are within easy reach.

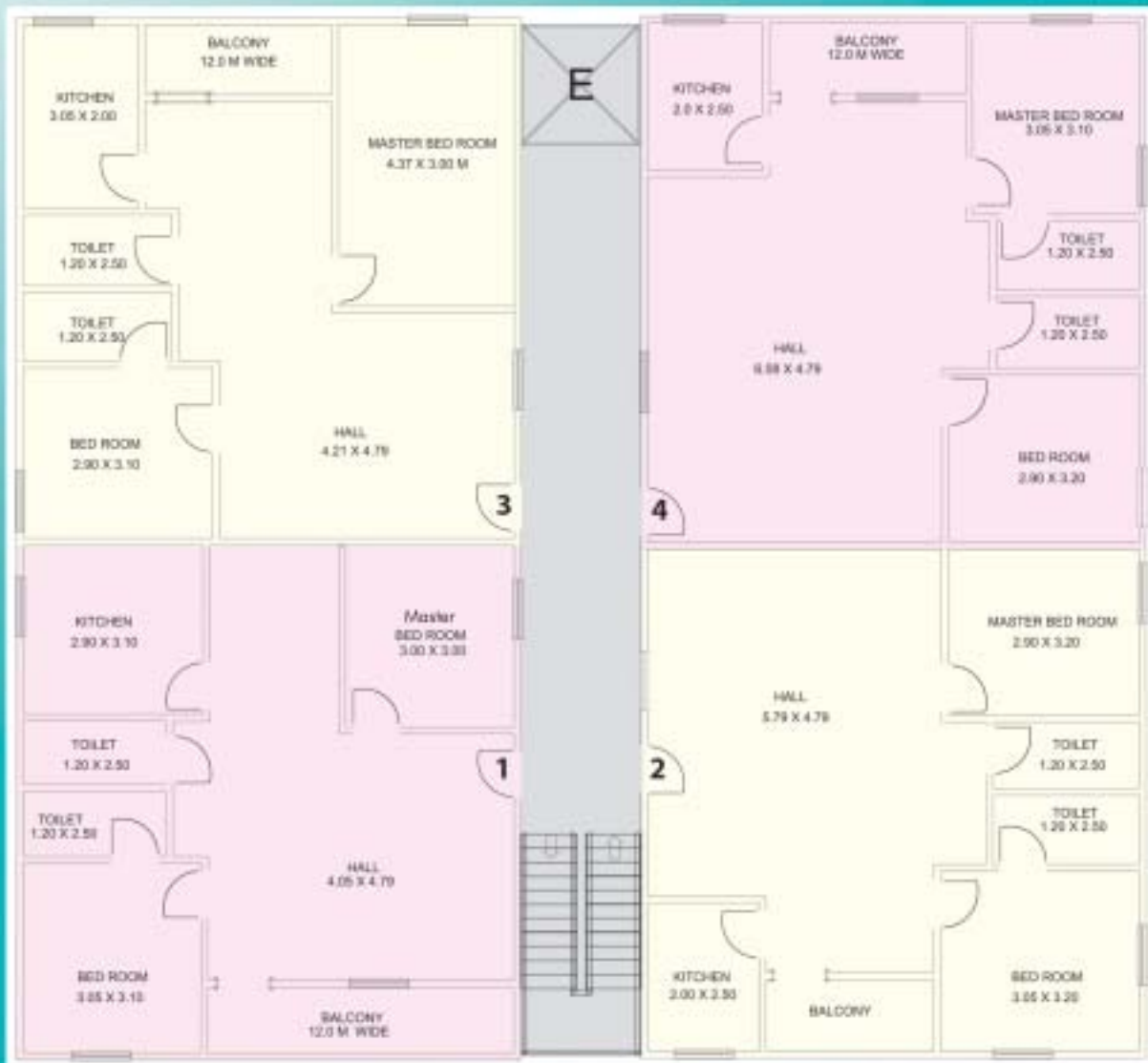




## Typical Floor Plan



Near  
VIZAG Airport



Each Flat 1000 sft



## Location Plan







# Wellfare Castle

## SIVAJIPALEM - VIZAG

Andhra Pradesh

Wellfare Castle is situated near SIVAJI PARK, in Sivajipalem which is one of the best picturesque geographical location in visakhapatnam city and is connected straight away to the NH-5. Sivaji Park : Covers around 3 acres of land and is open in th evenings. Main attractions are a Skating Ring, three fountains and a landmark tourist destination in the city. Being positioned in the neighborhood of such location - Wellfare castle is a proud property to be owned.



### HIGHLIGHTS

- | The project is located at Survey No. 47/2A,9A Waltair Ward, Sivajipalem, Vizag
- | 2&3 Bedroom Flats Available
- | Clear title land and immediate Registration.
- | Full Ground Water
- | All flats are aesthetically designed with 100% as per vastu
- | Schools, Markets, Colleges, Temples & Various Public Amenities are within easy reach.



## Typical Floor Plan



. Famous tourism place Kailasagiri



. The Neighbourhood Sivaji Park

Flat No.s	Flat Area
A	1150
B	1150
C	1450

## Location Plan



Not to scale







# Welfare Nilayam

SIVAJIPALEM  
VISAKHAPATAM

Andhra Pradesh

Residential  
Group House

## HIGHLIGHTS

Welfare Nilayam is situated near SIVAJI PARK, in Sivajipalem which is one of the best picturesque geographical location in visakhapatnam city and is connected straight away to the NH-5. Just 3 KM away from Beach Road and just beside MVP Colony - This project is a Hot Cake

- | The project is located at Survey No.42 Part Peethalavanipalem, Sivajipalem,Vizag
- | 2 Bedroom Flats Available
- | Clear title land and immediate Registration.
- | Full Ground Water
- | All Flats are aesthetically designed with 100% as per vastu
- | Schools, Markets, Colleges, Temples & Various Public Amenities are within easy reach.



## Typical Floor Plan



• Sivajipark Skating Rink.



• Sky Scraper City, MVP to Beach Road



• MVP Colony,  
billed as one of the biggest colonies in Vizag

## Location Plan

Not to scale







# Welfare Towers

**MADHURAWADA - VIZAG**  
**ANDHRA PRADESH**

Visakhapatnam is a coastal, port city, often called "The Jewel of the East Coast", City of destiny situated in the Indian State of Andhra Pradesh, located on the eastern shore of India, nestled among the hills of the Eastern Ghats and facing the Bay of Bengal to the east. It is the administrative headquarters of Visakhapatnam District and is also home of the Eastern Naval Command of the Indian Navy.

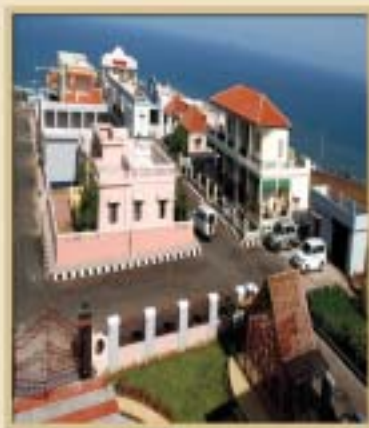
The IT SEZ, Steel Plant & Film Studio and many tourism developments have placed Vizag on top of global prominence.



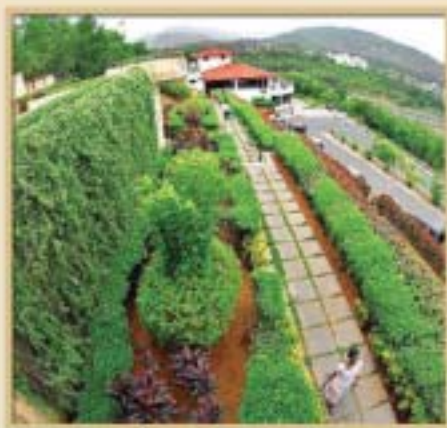
## *highlights*

- || The project is located at Survey No.33/2/A Bakkannapalem Village, Madhurawada, Vizag
- || 2, 3, 4 Bedroom Flats Available
- || Clear title land and immediate Registration.
- || Full Ground Water Zone
- || All flats are aesthetically designed with 100% as per vaasthu
- || Schools, Markets, Colleges, Temples & Various public Amenities are within easy reach.





• Ramanaidu studio



• A view of Rushikonda tourism resorts ...

## LOCATION PLAN



Not to scale





# PYDIMAMBA NIVAS

VIZIANAGARAM  
ANDHRA PRADESH



Vizianagaram district was formed on 1 June 1979, with some parts carved from the neighbouring districts of srikakulam and Visakhapatnam.

It is, at present, the largest municipality of Andhra Pradesh in terms of population. It is located about 18 km inland from the Bay of Bengal, and 40 km northwest of Visakhapatnam. While the literal meaning of Vizianagaram is the City of Victory, it is also sometimes referred to as the city of education in these parts as there are many colleges and schools here. It is an important business and educational center for north coastal Andhra, otherwise known as Uttarandhra.

There are a number of industries around the city. The country's largest ferro - manganese plant is situated in Garividi in the outskirts of the city.

Vizianagaram is the favorite destination, when it comes to textile wholesale market.

Sri pydithalli Ammavaru the Goddess & proctor of Vizianagaram is show long her blessings for the growth of this developing city.



## HIGHLIGHTS

- The project is located at Survey No.553 Cantonment, Vizianagaram
- 2&3 Bedroom Flats Available
- Clear title land and immediate Registration.
- Full Ground Water
- All flats are aesthetically designed with 100% as per vastu
- Schools, Markets, Colleges, Temples & Various Public Amenities are within easy reach.



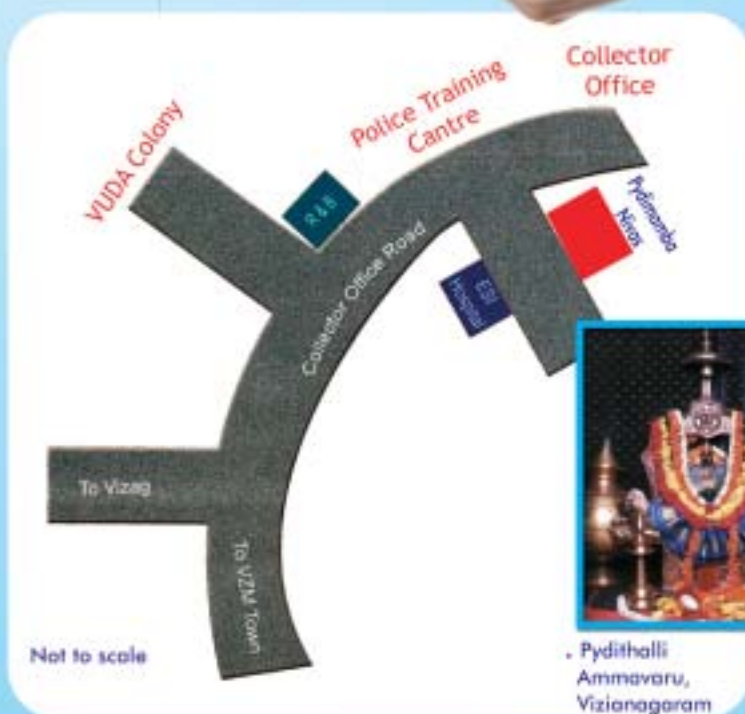
## Typical Floor Plan



N



. Famous Ganta Stambham, Vizianagaram



. Pydithalli Ammavaru, Vizianagaram





# wellfare township

JHARSUGUDA, ODISHA



Jharsuguda is a municipality and district of Odisha, India. The town is situated in the region of Western Orissa. The railway station comes under South Eastern Railway. As an important junction on the current Howrah - Mumbai route, Jharsuguda is directly connected to all the metros and states of India, especially Chhattisgarh, Odisha and Jharkhand.

The town is cosmopolitan in nature and no ethnic group makes up a majority of the population. The larger groups are the native Oriya population, Coastal Orissa people, Bengalis, Biharis, Marwaris, Gujaratis, Punjabis, Sindhis and Telugus, the religious demography of Jharsuguda is dominated by the Hindus, who form about 86% of the town's population; the remaining 14% is made up of Muslims, Christians, Buddhists and a few Parsees.

The industrial growth has created tremendous employment Opportunities and many prefer to settle down here.

✓ The project is located at Khatian No's.31,33,70 Plots No's.150,152,153,154,155,156,157,159,161,162,163,164,165,168,169,182,183,184,186,187,188,189,190,151/1923,152/1924,153/1925,185,191,185/1921,166/1922

Mouza - Lahandabad,  
Jharsuguda -thana & thasil,  
Jharsuguda Dist, Orissa.

- ✓ Surrounded by Schools & Colleges.
- ✓ 5 Decimal Plots Available.
- ✓ Ground Water Zone.
- ✓ Ready for Registration.

*highlights*



## Layout Plan



• Lord Jagannath Rath Yatra At Jhanda Chowk, Jharsuguda



• Christmas Celebration at St. Arnold's Catholic Church



BYM Chowk

Lahandabud

Baxi Chowk

Brajraj Nagar

Basti Area

Wellfare Township

## Location Plan

Not to scale





## WELFARE TOWNSHIP

### RAIRANGPUR - ODISHA

Rairangpur is a town and a notified area council in Mayurbhanj district in the Indian State of Odisha.

It is situated at about 85 KM from Baripada and about 80 km away from Jamshedpur. The Sulaipath Dam is a local attraction nearby and Shimilipal Sanctuary is in the

approachable distance attracting many foreign tourists.

Rairangpur has the oldest and the largest Sal Oil

Extraction plant. Sal seed is locally collected from the forest. The nice climatic condition make this place suitable for happy living.

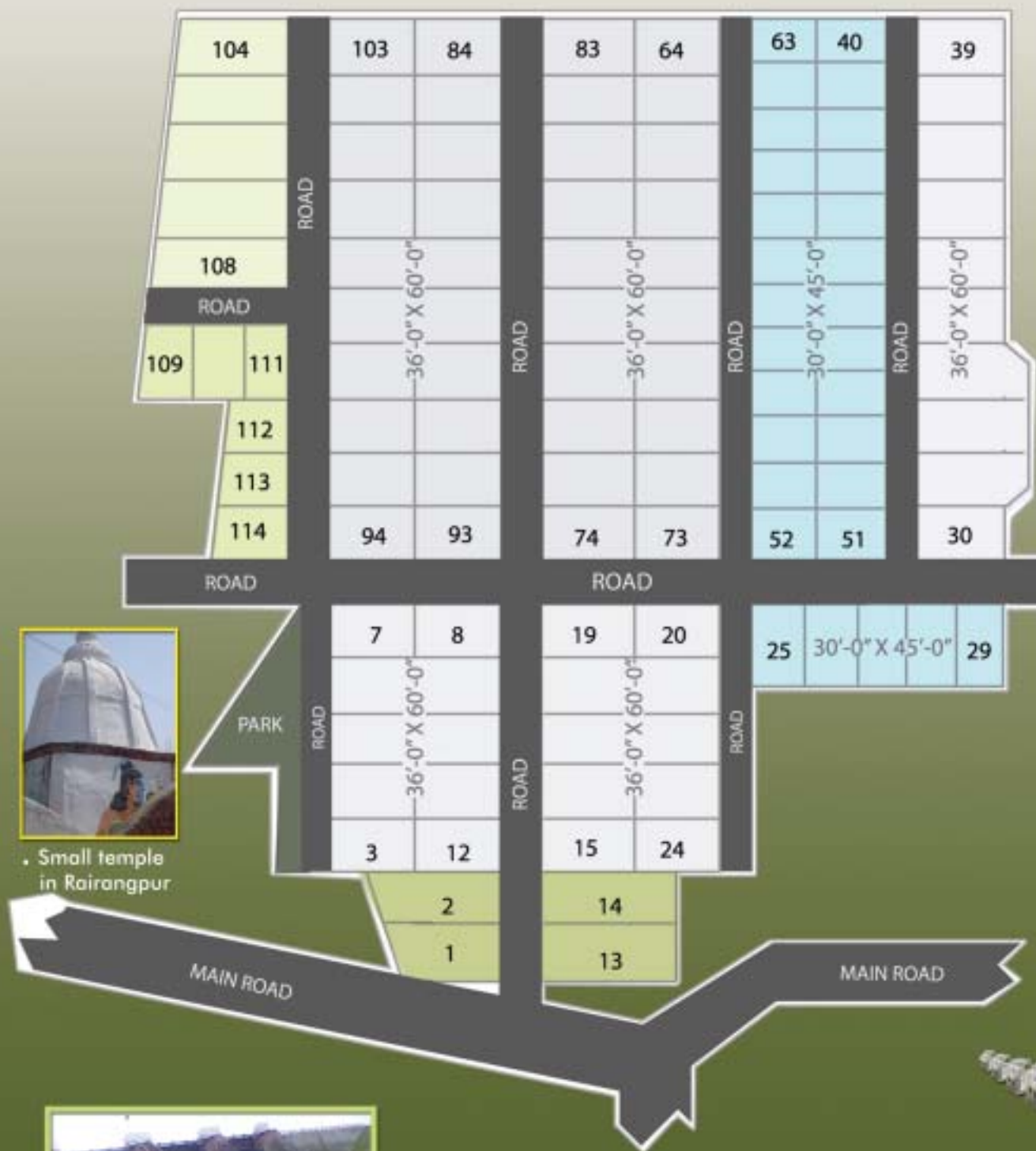


- ▶ The project is located at Khatian No.40 & 705, Plots No.1450,1452,1454,1455,1456,1457,1458,1459,1460,1461,1462,1463,1464,1465,1466,1467, Ichinda Village, Rairangpur-PS & Tahasil, Mayurbhanj Dist, Orissa.
- ▶ Surrounded by School & Colleges
- ▶ 36'0"x60'0" & 30'0"x45'0" Plots are available
- ▶ Ground Water Zone
- ▶ Ready for Registration

### highlights



# Layout Plan



• Small temple in Rairangpur



• Sulaipat Dam ( Khadakhai Dam).







# **WELFARE TOWNSHIP**

## **SAMBALPUR, ODISHA**

(Individual Duplex Houses)

Sambalpur is a municipality in the state of Orissa, India. It is the headquarters and the largest town of Sambalpur district.

Sambalpur derives its name from that of the Goddess Samaleswari, an incarnation of Shakti who is regarded as the reigning deity of the region. Sambalpur lies at a distance of 321 km from the capital city of Bhubaneswar. In history, it has been variously known as 'Sambalak,' 'Hirakhanda' etc.

Sambalpur is mentioned in the book of (2nd century) as Sambalaka on the left bank of river " known as Mahanadi. Sambalpur had also been known as 'Hirakhand' meaning 'Land of Diamond'. In the past Sambalpur was famous for diamond mining and trade. Even now, the adjoining areas yield a large volume and value of semi - precious stones.

### **highlights**

- The project is located at Khatian No's 116/254, 116/102, 116/76, 116/83, 24, 64, 100, Plots No. 485, 489, 492, 499, 500, 448, 462, 533, 536, 537, 503, 476 to 488, 909 etc., Mouza - Jogipalli, Rengalli-thasil, Sambalpur Dist, Orissa.
- Surrounded by Schools & colleges
- 5 Deciml Plots Available.
- Ground Water Zone
- Ready for Registration
- Own a plot and entrust us to build a duplex houses.

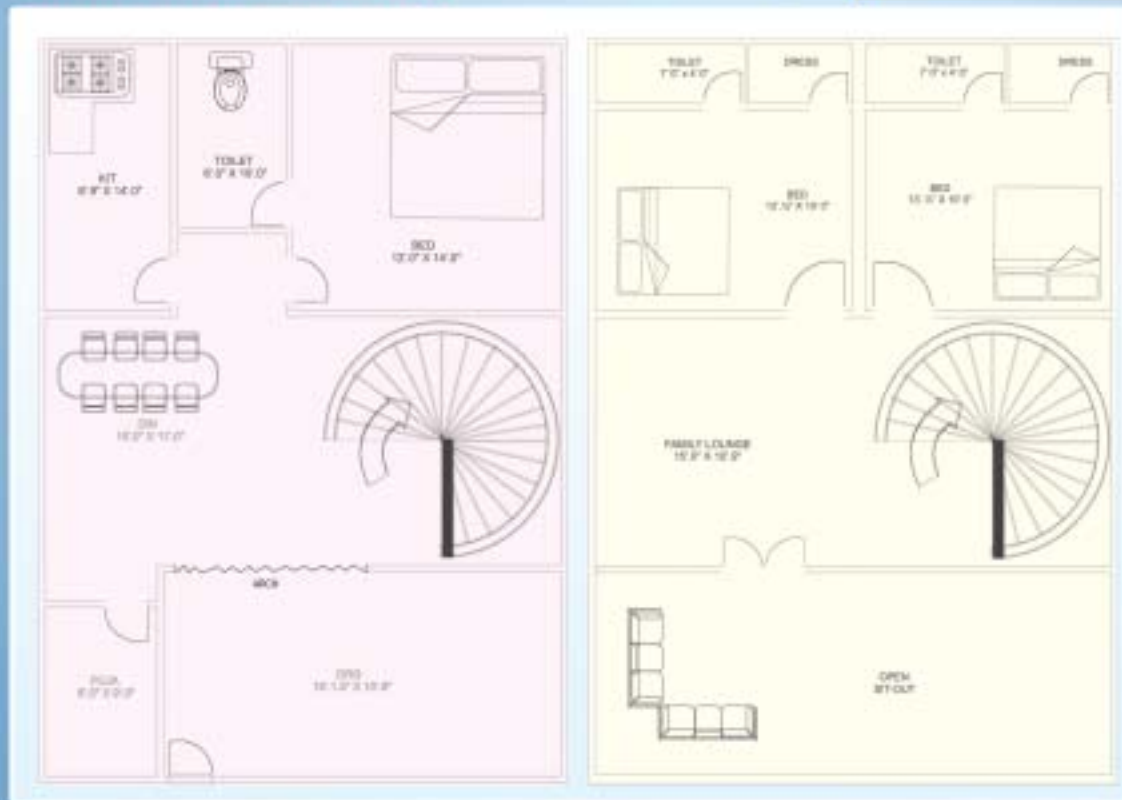


## Layout Plan



## Model Plan (Duplex House)

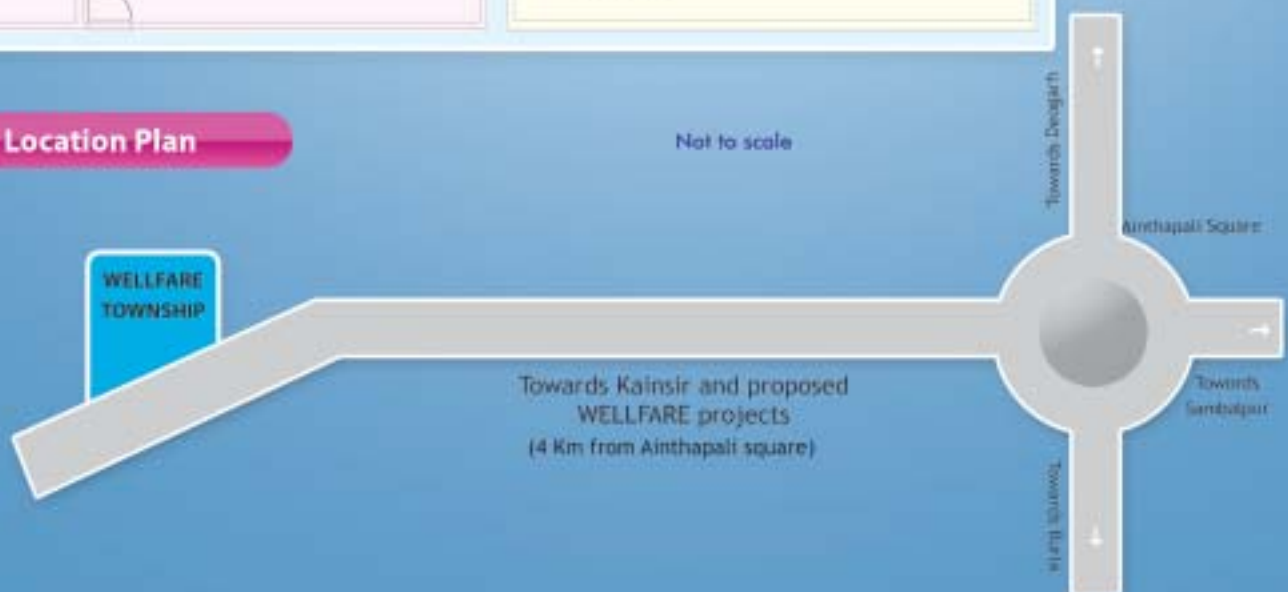
Hirakud Dam and Reservoir, Sambalpur, Orissa



Distance Education Sambalpur University, Orissa

## Location Plan

Not to scale







## **WELLFARE TOWNSHIP**

**DALTONGUNJ  
JHARKHAND**

Daltongunj is the Head Quarters of Palamu Dist. in the state of Jharkand. Situated on the Banks of the River North Koel, this town is named after the British Commissioner of Chota Nagpur - Col Dalton. It is accessible by train from Patna, Ranchi, Kolkata and Delhi.

The famous Palamu National Park, Spread over a sprawling 250 Square Kilometers is located nearby. The rarest of the rare species of the Jungle are protected in this project thus attracting thousands of tourists every year.

Hence, Daltongunj is popular across the globe and enviromentally the best to live for life.

- » Ground Water Zone
- » Ready for Registration

- » The project is located at Khata No.s 47, 56 & 128 & Plot No.s 1981 / 12A, B, 1975, 1980, 1988
- » Surrounded by Schools & Colleges
- » 3&5 Decimals Plots available
- » Only 3 KM from Main Chowk

**HIGHLIGHTS**



## LAYOUT PLAN



• DAV Institute of Engineering & Technology, Daltonganj



• HERITAGE INTERNATIONAL SCHOOL



WELFARE TOWNSHIP, Daltonganj, Jharkhand.

### AREA STATEMENT

PLOT SIZE	PLOT NOS	NO. OF PLOTS
36'0" x 60'0" (5 Decimals)	1 to 13, 23 to 72, 87 to 91, 166 to 205 230 to 249, 296 to 312 316 to 333, 362 to 369	171
30'0" x 45'0" (3 Decimals)	14 to 22, 73 to 86, 92 to 165, 206 to 229 250 to 295, 313 to 315 334 to 361, 370 to 373	202

## LOCATION PLAN



Not to scale





## WELLFARE TOWNSHIP

**GHATSILA**  
**JHARKHAND**

Ghatsila is a census town in purbi Singhbhum District, in the state of Jharkhand. The City is located on the bank of the Subar marekha River, and is situated in forested area. Natmali is the beauty of Ghatsila, It is becoming a favoutite tourist spot, especially for Bengalis from Kolkata and other places.

Hindustan Coper Limited (HCL) is located at Moubhandar, a mile away.

Ghatsila is best known for the HCL mines because they are Asia's first copper mines and the World's second deepest mines.

Mother nature's glory is at its best in Ghatsila..  
Best place for a life long stay.

- » The Project located at Katha No.153, 161,182, 184, & 223 plot No.s 157,162,168,206 to 220, Thana No. 113, Ghatsila, East Singhbhum District.
- » 3 and 5 Decimal Plots available.
- » Clear title land and immediate Registration.
- » Tree Guards & Roads.
- » Full Ground Water
- » 10 Min. drive from Bus Stand
- » Near By Schools & Colleges

# HIGHLIGHTS



## Layout Plan



The Beautiful Ghats of Ghatsila

## LOCATION PLAN







# WELFARE TOWNSHIP HAZARIBAGH JHARKHAND

## REAL ESTATE PROJECT

## HIGHLIGHTS

Jharkhand State is the nerve centre of "Welfare" activity. And Hazaribag is the key constituency in the records of the organization. Welfare Township - offers wonderful House sites in this beautiful city.

Hazaribag means 1000 Gardens. It is a famous hill resort situated at an altitude of 2019 ft. above sea level. This place has got excellent scenic view and climate. Hazaribag is 93 km from Ranchi and possess rich collection of flora and fauna. It is also popular picnic spot and famous for water sports. Hazaribag national park and sanctuary are famous spots which covers 184 sq. kms.

The tanneries and coalmines around Hazaribag give that extra flavor to the importance of the city. Truly an excellent place to live on for life.

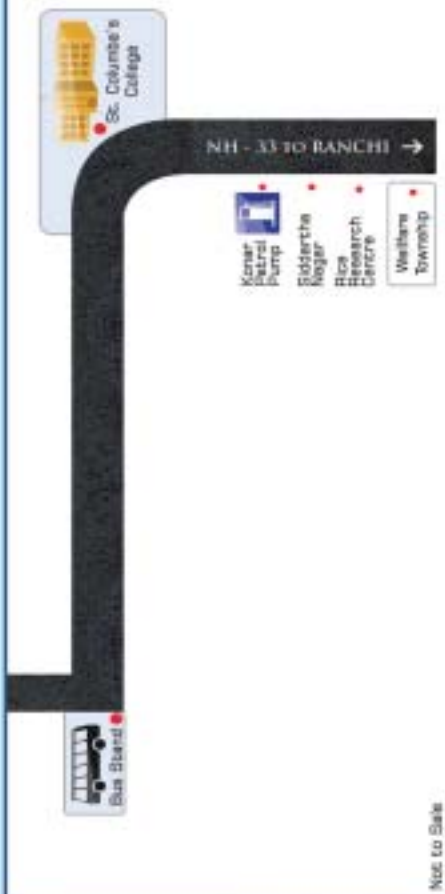
- » The project is located at Khatian No.45, 142 etc, Plot No's 204,2015 etc., Khapariyawan Village, Bamhanbai Mandal Thana No. 119,(Near Siddharha Nagar) & Rice Research Center on NH 33 to Ranchi.
- » 1 Khata = 4 Decimals = 1740 Sq. Ft available. Clear title land and immediate registration.
- » Tree Guards & Roads.
- » Full ground water zone.
- » 10 Min. drive from bus stand.
- » Surrounded by existing housing colonies.
- » Huge residential public school in extent of 20 acres near this layout.



## Layout Plan



## LOCATION PLAN



• Border Security Force, Training Centre & School



• Hazaribagh wild life sanctuary

Not to scale





**WELLFARE PLAZA**

**CHAIBASA  
JHARKHAND**

Chaibasa is a city and a municipality in West Singhbhum district in the state of Jharkhand, There are a lot of picnic spots near Chaibasa, Suchas.

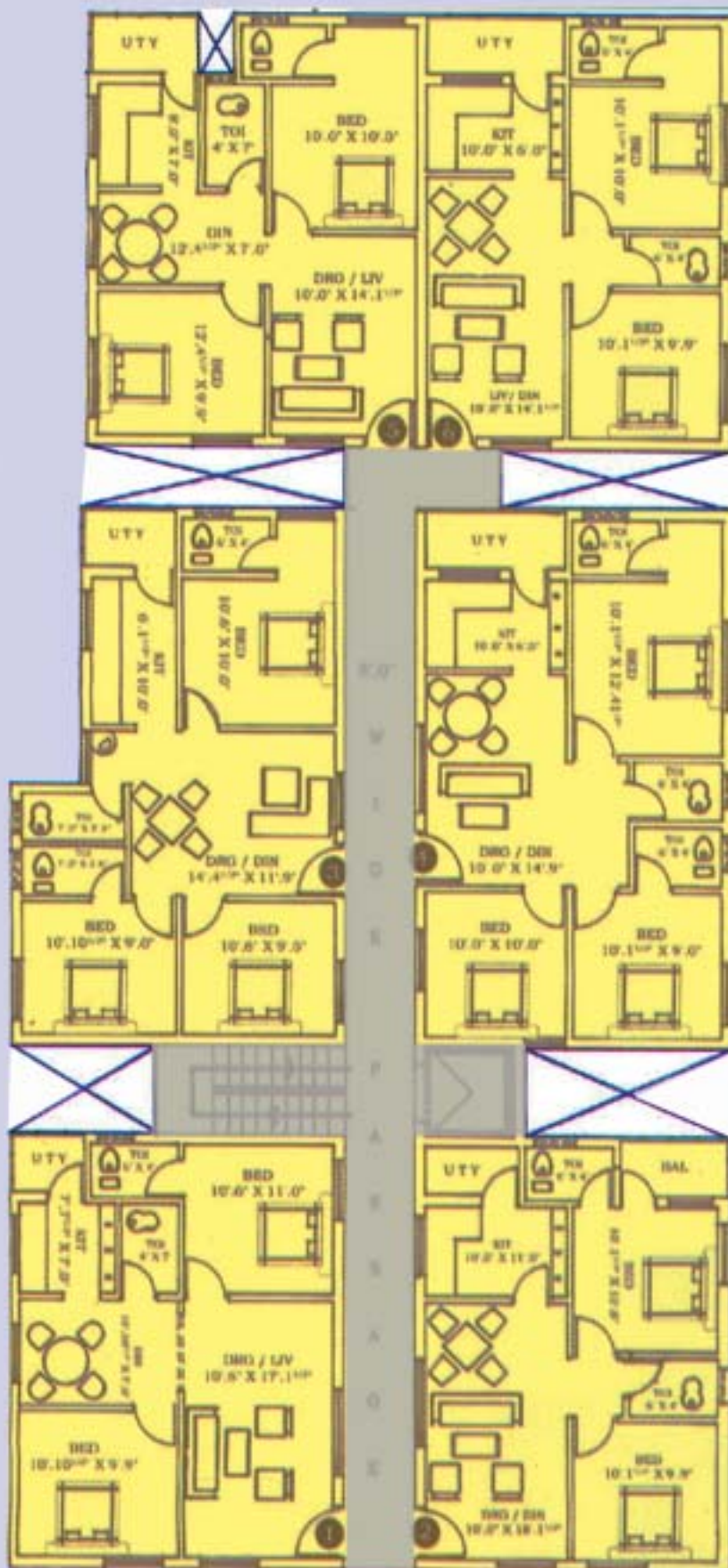
- Chaliyama Dam - Kuju - Lutheran Jheel - Rungta Garden - Kokcho - Jhikpani  
- Roro Dam - Airport Garden

In the heart of town there is a small lake with two small Islands. Recent renovation makes them worth a visit.

- » The Projected is located at Khatian No.140 & 39, Plot No's 22(a to d) & 23 part, West singhbhum, Near Palika (Dumbisai) Chaibasa
- » 2 Bedroom Flats available.
- » Clear title land and immediate registration.
- » Full ground water.
- » All Flats are aesthetically designed with 100% as per vastu.
- » School, Markets, Colleges, Temples & Various Public Amenities are within easy reach.

**HIGHLIGHTS**





## TYPICAL FLOOR PLAN

Flat No.	Flat Area
1	885
2	825
3	970
4	1020
5	885
6	825



. Clock Tower in Chaibasa.



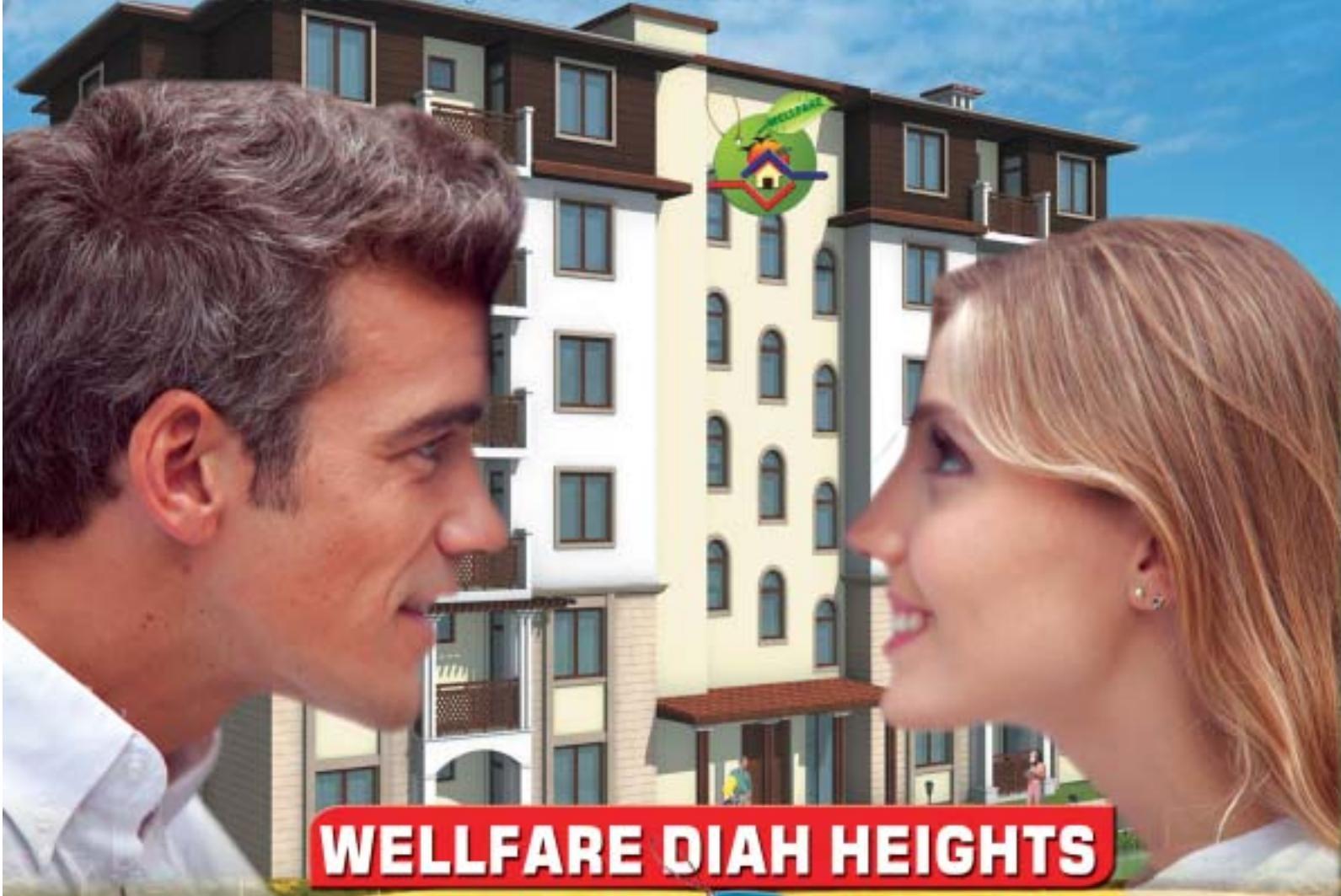
. Chaibasa : The Busy Bus Stand

## LOCATION PLAN

Not to scale







## WELFARE DIAH HEIGHTS

**DHANBAD**  
JHARKHAND

Dhanbad is a city in the state of Jharkhand and is also known as the 'Coal Capital of India'.

Dhanbad is 79th among the top fastest growing cities of world.

According to 2001 census, Dhanbad is among the 35 cities of India with population more than one million. Among the Rail Divisions of Indian Railway, Dhanbad Rail Division is in second position in terms of revenue generation.

Tata Steel, BCCL, ECL and IISCo are some of the companies having up costing in the district.

These companies have developed townships for their employees.

Dhanbad is the most developed city in Bihar & Jharkhand.

Dhanbad is the best in growing in IT sector too.

## HIGHLIGHTS

- » The project is located at Khatian No.24, Plot No: 44, Mouza No:48 Bhuda Village, Sadar Sub-Regd., Dhanbad
- » 2&3 Bedroom Flats Available
- » Clear title.
- » Full Ground Water
- » All flats are aesthetically designed with 100% as per vastu
- » Schools, Markets, Colleges, Temples & Various Public Amnities are within easy reach.
- » Available in Two Blocks Lilly & Lotus.



## Typical Floor Plan



LOTUS  
FLOOR PLAN



No to scale



Coal mine in Dhanbad, India



LILLY  
FLOOR PLAN

## Location Plan



Railway lines of dhanbad station







# WELFARE TOWERS

JAMSHEDPUR JHARKHAND

Welfare Towers a landmark apartment project from the Welfare Buildings and Estates Pvt. Ltd. Located just by the side of Transport Nagar, Dimna Road, Mango. 10 minutes drive from the Nerve Center, Bistupur.

The dimna road, Mango and the surrounding areas are fast developing with a promising future.

Welfare Towers consisting 2/3 Bedroom Flats. Stringent quality control norms are followed.

- ✓ The project located at Khatian No. 311, Plot No: 232, Mango, Jamshedpur, Jharkhand.
- ✓ 2/3 Bedroom Flats available.
- ✓ Clear title land and immediate registration.
- ✓ Full ground water.
- ✓ 10 Min. from Bistupur.
- ✓ All flats are aesthetically designed with 100% as per vastu.
- ✓ School, Markets, Colleges, Temple & Various Public Amenities are within easy reach.

*highlights*



## Typical Floor Plan



Jamshedpur Airport



Tatanagar (Jamshedpur) Railway station

Not to scale

Flat No.	Flat Area (Sft.)
1 to 6	900
7	885
8	550
9	550
10	885
11 to 13	1200

## LOCATION PLAN







# Welfare Kuteer

## KHUNTI JHARKHAND

Khunti is the district headquarters in the Indian state of Jharkhand.

The place draws its name from Maharani Kunti of the Mahabharata fame. It is widely believed that she along with her five famous sons pandavas was here during their year of anonymity. It is historically known for the center of activity of the Birsa movement. Birsa Munda was born in Khunti.

Mahua Toli Village, Khunti Road.

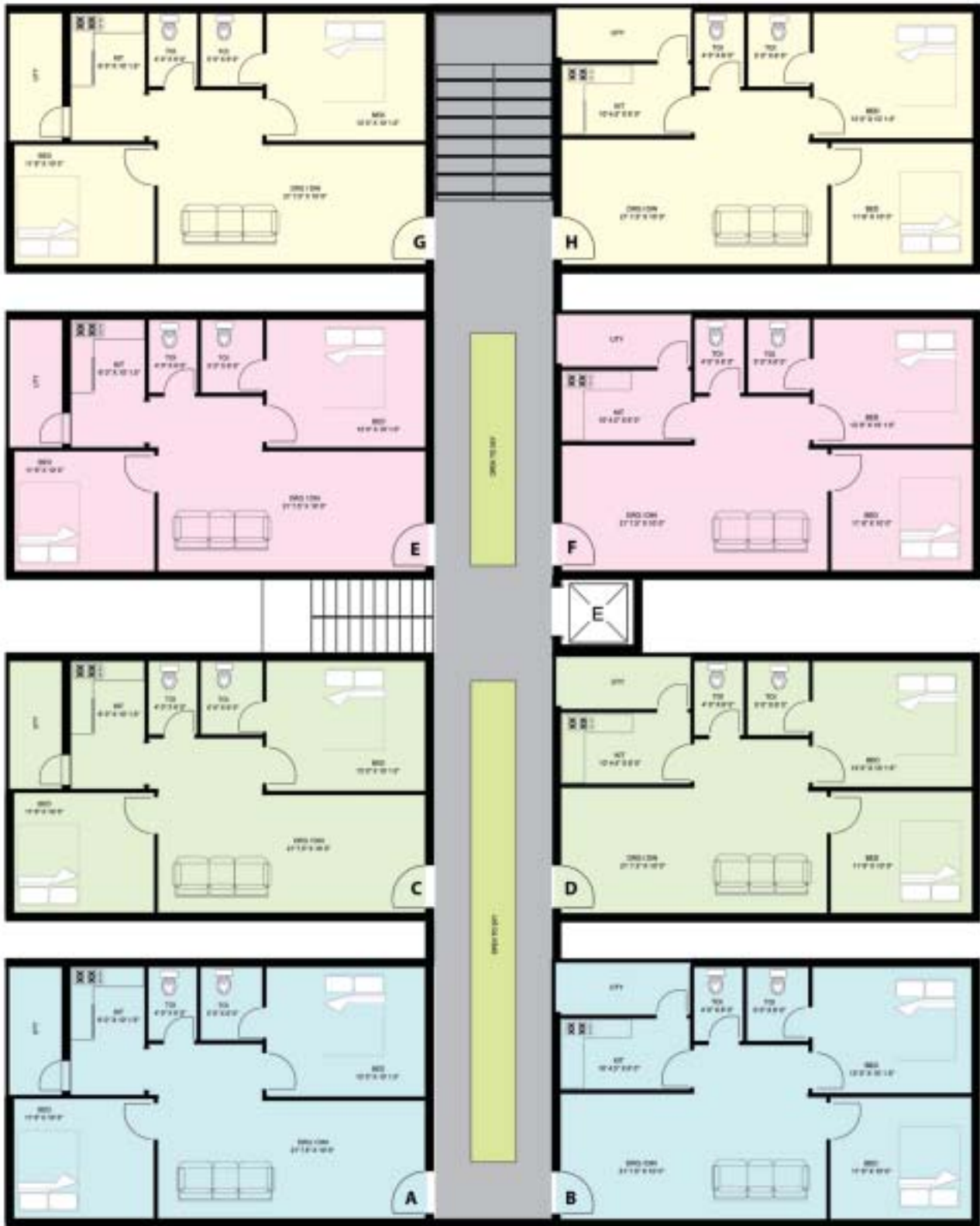
### highlights

- The project located at Khatian No.90, Plot No. 17&25, Mohua Toli Village, Khunti, Ranchi, Jharkhand.
- 2 Bedroom Flats Available.
- Clear title land and immediate Registration.
- Full Ground Water.
- All flats are aesthetically.
- Designed with 100% as per vaasthu.
- Schools, Markets, Colleges, Temples & Various Public Amenities are within easy reach.





# TYPICAL FLOOR PLAN



• Khunti Silent valley

## Location Plan







# WELFARE HEIGHTS

## RANCHI - JHARKHAND



Ranchi is the capital city of the Indian state of Jharkhand. Jharkhand accounts for 40% of mineral resources of India. Alone Ranchi accounts for 50% mineral production of the state, nearing about 18% of nation's mineral production. For this reason Ranchi is also called the Manchester of the East. Hence registering very fast paced progress

### H Y G H T S

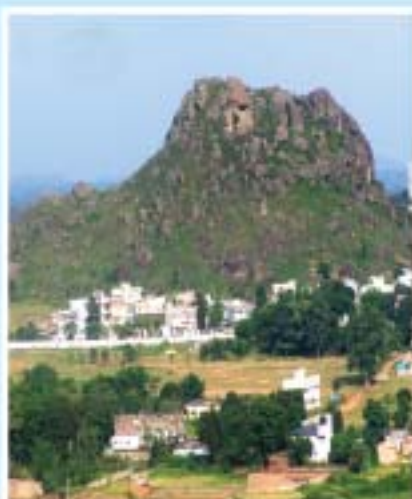
- ▶ The project located at Khatian No.55, Plot No. 771 & 781/A, Jhiri Village, Ranchi.
- ▶ 2, 3 & 4 Bedroom Flats Available
- ▶ Clear title land and immediate Registration.
- ▶ Full Ground Water
- ▶ All flats are aesthetically designed with 100% as per vastu
- ▶ Schools, markets, Colleges, Temples & Various public Amenities are within easy reach.



# RANCHI LAND MARKS



THE BUSY MARKET AREA



THE FAMOUS TAGORE HILLS

## Location Plan



## MODEL PLAN







# Swarna Rekha Enclave

**PARUSUDIH**  
**JAMSHEDPUR**

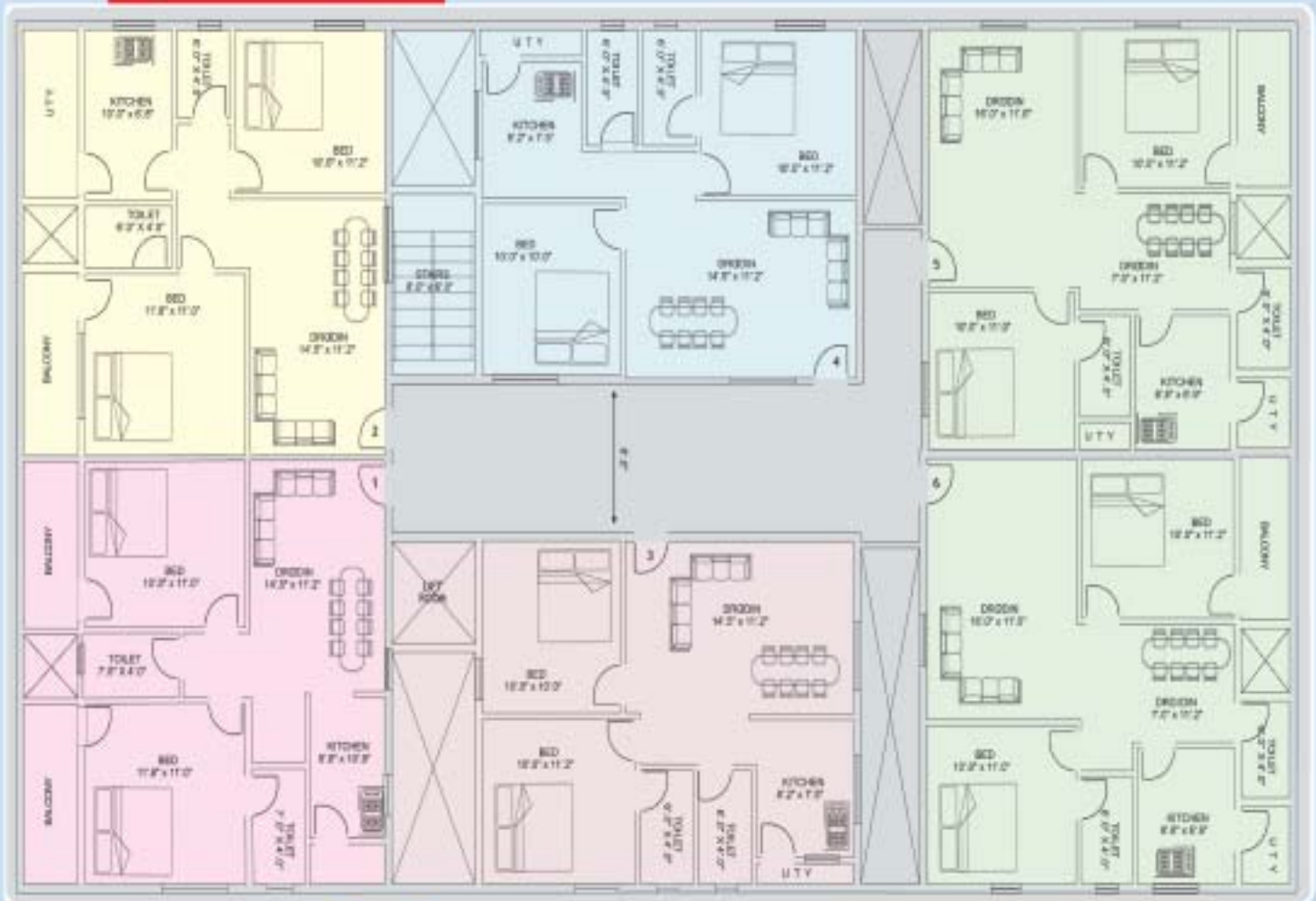
Parsudih :  
Situating in the southern  
part of Jamshedpur,  
is one of the largest residential area of the  
City. Home to Golpahari Temple,  
the oldest temple in Jamshedpur,  
is also the most visited temple.

- ▶ The project located at Khatian No.102  
Plot No.787, Parusudih, Haludhani,  
East Singhbhum, Jamshedpur, Jharkhand.
- ▶ 2 Bedroom Flats Available.  
Clear title land immediate Registration.
- ▶ Full Ground Water.
- ▶ All flats are aesthetically designed  
with 100% as per vastu.
- ▶ Schools, Markets, Colleges, Temples &  
Various Public Amenities are within easy reach.

## HIGHLIGHTS



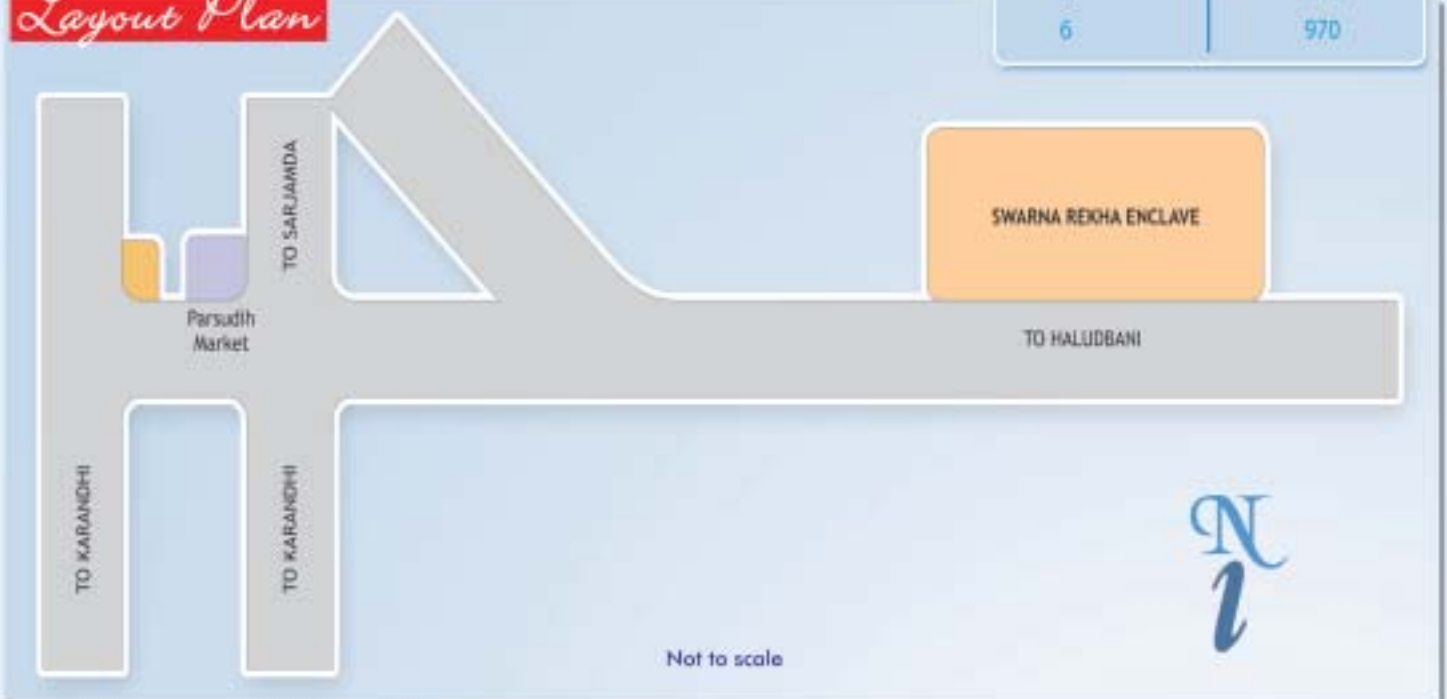
## Location Plan



The annual fest of Khuntpani Shrine.

Flat No.	Flat Area (Sft.)
1	970
2	970
3	825
4	825
5	970
6	970

## Layout Plan



Not to scale





Balaji Nagar taking birth in Kharagpur a unique city having people from all over the country to work at its biggest loco shed and Railway complex, being a wonderful business centre having Kolkata and Jamshedpur on its either sides. Not only this, Kharagpur feels proud for its longest platform in the world and the biggest Indian Institute of Technology training out hundreds of talented youth and also with beautiful waterfalls and picnic spots in and around the city.

This traditional city known for its National Integrity has a vast potentiality for residential colonies. Balaji Nagar touching the standards of its residents is being developed adjacent to Bombay highway in a pollution free zone and to the reach of all domestic necessities.

Best bet to own a bit of your own land.

# BALAJI NAGAR

**KHARAGPUR - WEST BENGAL**



- ▶ The project located at Plot No.237 to 243, 246, 315, 317, 318, 222part Mouza - Jharia, Kharagpur, West Bengal.
- ▶ Surrounded by Schools & Colleges.
- ▶ Avenue Plantation & Landscaping for the entire layout
- ▶ 36'x60' (240 Sq. Yds), 26'x50' (144.44 Sq. Yds) Plots available.
- ▶ Ground water zone.
- ▶ Ready for Registration.

## HIGHLIGHTS



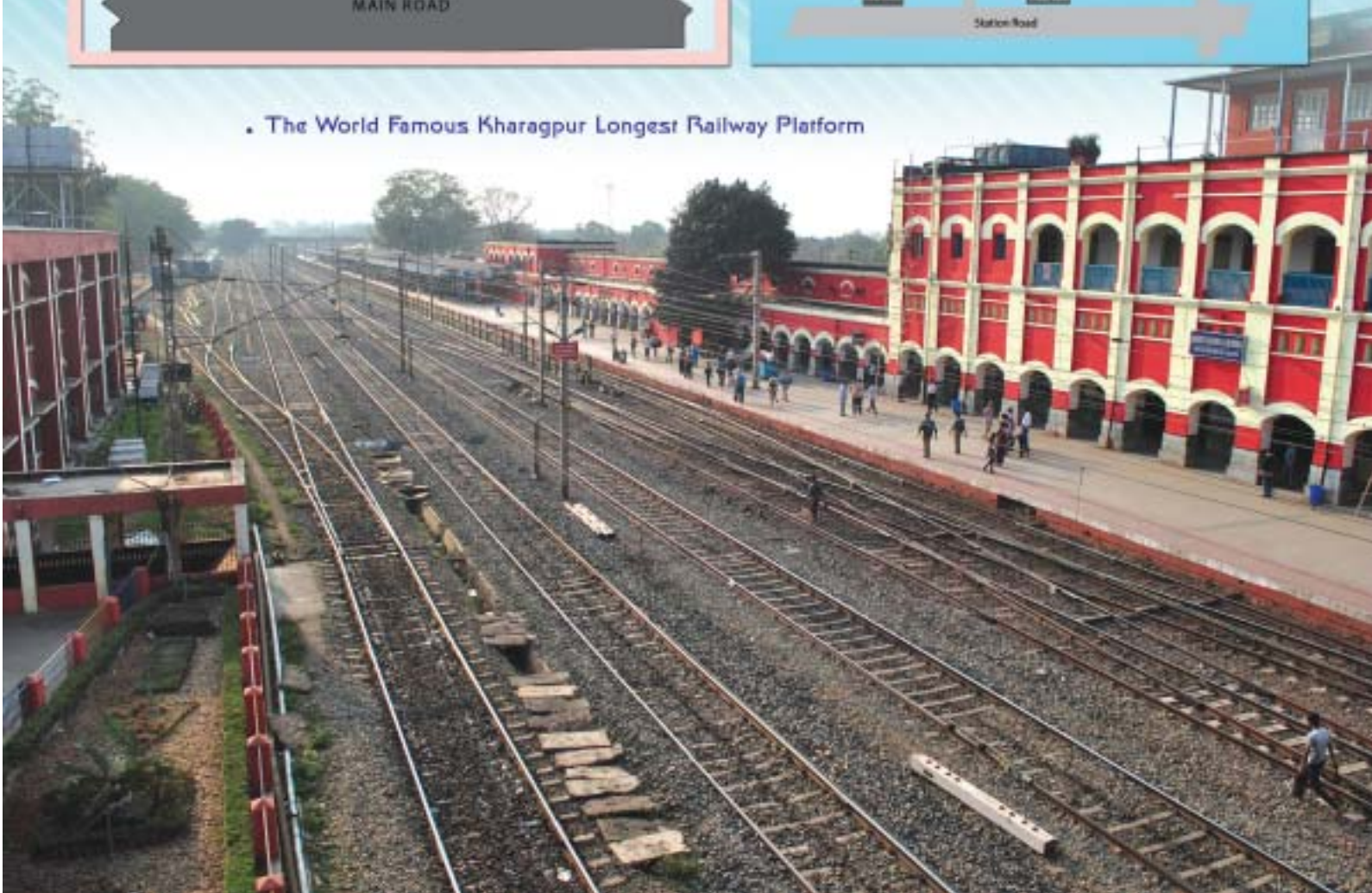
## LAYOUT PLAN



## LOCATION PLAN



- The World Famous Kharagpur Longest Railway Platform







# Wellfare Township

## PURULIA

### WEST BENGAL

Purulia also spelled puruliya, is a town located in West Bengal. It is the headquarters of purulia district. purulia is on the north of the Kasi river and is a major road and railway junction. Purulia municipality was constituted in 1876.

Purulia is also famous for the prestigious institution named Ramakrishna Mission Vidyapith.

This is a residential school for boys with the calm environment of ancient gurukul system which was the ideology of Swami Vivekananda. Purulia also has famous Sainik School on Ranchi Road. But the oldest of the school is Purulia Zilla School which was established in the year 1856.

Top class education is rendered here and many employees prefer to live here keeping in view their children's future. Best place to live on... forever.

### *highlights*

- The project located at Khatian No.6,371,372,422, 543,544,545,562,563&769, Mouza - Bongabari, Surulia, Purulia(Mandal), J.L. No.65, Purulia Dt.
- Surrounded by Schools & Colleges
- 36'0"X60'0" & 30'0"x45'0" plots are available
- Ground Water Zone
- Ready for Registration



## Layout Plan



• Purulia church



• Sainik School Purulia

## Location Plan



Welfare Township  
Purulia



Not to scale





# Wellfare Township

## RAGHUNADHPUR

### WEST BENGAL

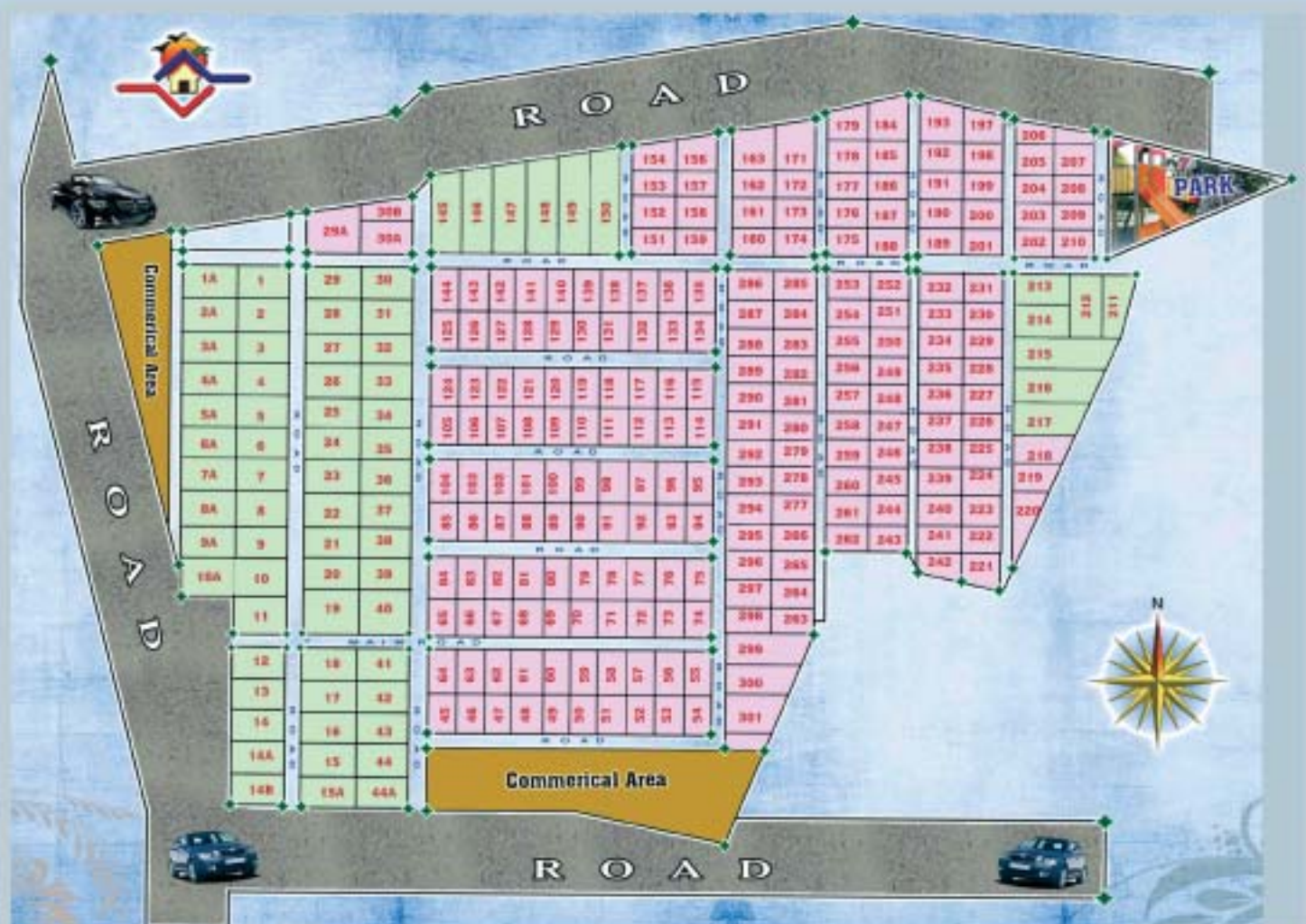
Raghunadhpur is a sub-division and town in Purulia District of West Bengal. Damodar Valley Corporation has planned for a power plant at Raghunadhpur.

Raghunadhpur is an Intermediate Panchayat in Purulia Dist. Jaychandi pahar 3 km from Raghunadhpur, is a popular transit centre and major attraction for rock climbing. Many industries are lined up here, offering scope for vast employment opportunities.

- ▶ The project is located at Khatian No.13, 34, 75, 94, 123, 56, 79, 63, 188, 180, 195 & 143, Ras plot No. 600,2608, JL No.118, Moujanandhaha, Raghunadhpur Post, Purulia Dist.,
- ▶ 3 Kattha (36'x60') and 2 Kattha (32'x45') Plots available
- ▶ Clear title land and immediate Registration.
- ▶ Tree Guards & roads.
- ▶ Full Ground Water
- ▶ 10 Min. drive from Bus Stand

*highlights*





WATER TREATMENT PLANT AT LAKSHANPUR OF RAGHUNADHPUR



Sarengbari Eco-Park







# Wellfare Shanti Nagar - Suri

**WEST BENGAL**

SHANTI NAGAR - A Prestigious house sites project of Wellfare at Suri. Being a District Head Quarter and Business Centre, Suri is experiencing multi - dimensional growth. Biswakabi Rabindranath Tagore - who lives in every Indian's heart with the inspiring lyric of our National Anthem is omni present in Suri as the world famous Shanti Niketan is just 30 KM away from this place. The Thermal power Project and other Industries have expanded the employment opportunities too.

Suri is a place which is preferred today by many for peaceful living and the need for suitable residential layouts is ever increasing. Hence, Shanti Nagar Project by Wellfare. A real boon to the residents of Suri.



## HIGHLIGHTS

- The project located at Plots No: 35,39, 40,47,48,49,478 etc. Mouza - Palsara, Suri, Birbhum Dist., West Bengal.
- Surrounded by Schools & Colleges
- 36'x60' (240 Sq.yds), 26'x50' (144.44 Sq.Yds), 35'x50' 4 Decimals
- Ground Water Zone.
- Ready for Registration.



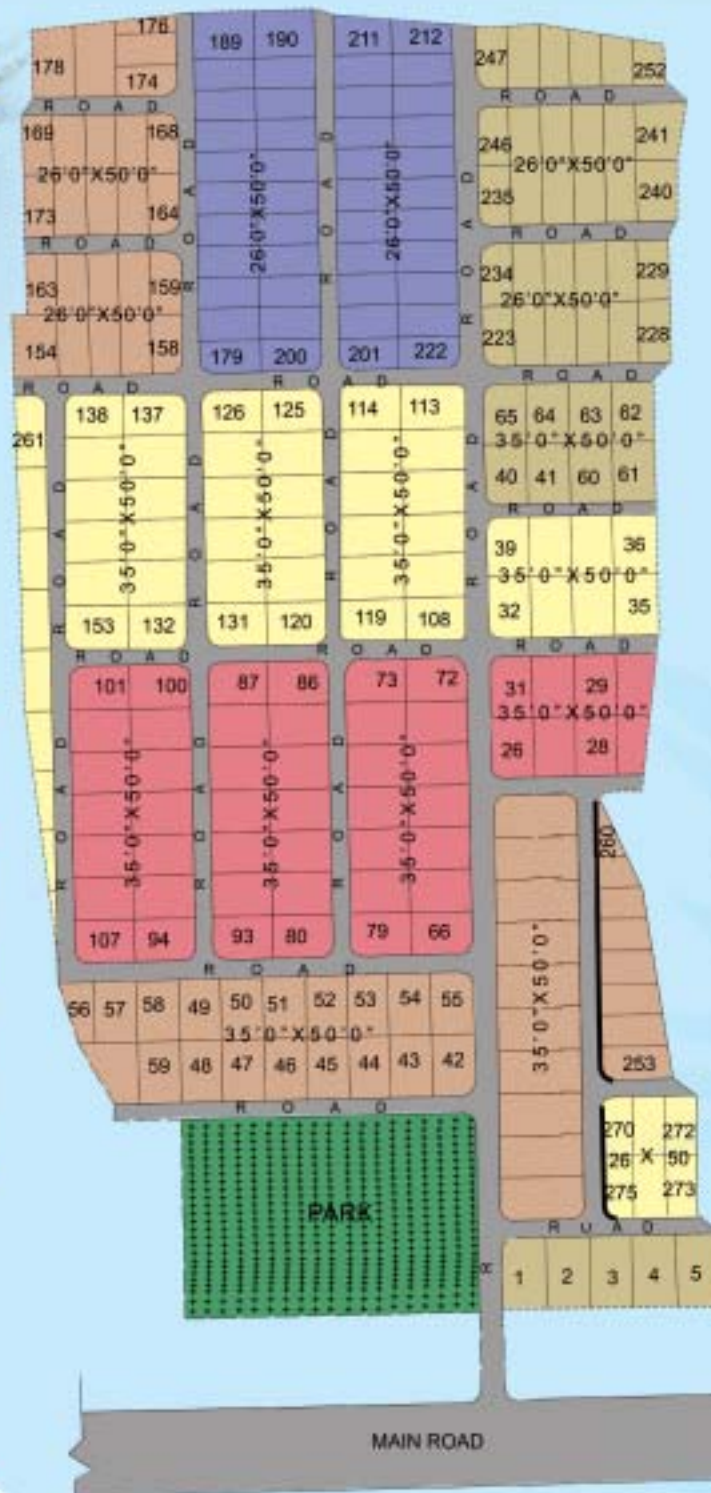
## Layout Plan



• Suri busy market



• Bengali Temple at Suri



## Location Plan



Not to Scale





## WELFARE RESIDENCY

**DURGAPUR**  
WEST BENGAL

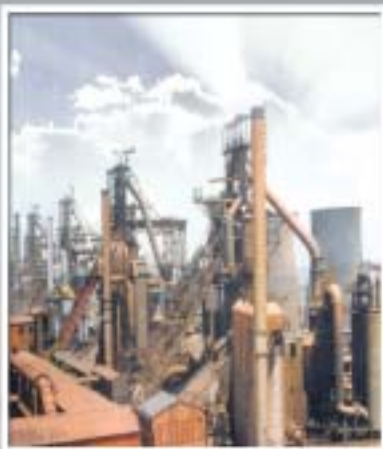
Durgapur is an industrial city in the state of west Bengal, India, located about 160km from Kolkata. It was a dream child of the great visionary Dr. Bidhan Chandra Roy, the second Chief Minister of the state.

The well layout industrial township, designed by Joseph Allen Stein and Benjamin Polk is now West Bengal's third largest city after Kolkata and Asansol. It is home to the largest industrial unit in the state, Durgapur Steel Plant, one of the integrated steel plants of Steel Authority of India Limited. Alloy Steel plant of SAIL and CMERI, a CSIR laboratory, are also located here. There are a number of power plants, chemical and engineering industries. Some metallurgical units have come up in recent years. It also has National Institute of Technology, Durgapur, one of the NITS of the country. Durgapur is situated on the bank of river Damodar, just before it enters the alluvial plains of Bengal.

## HIGHLIGHTS

- » The project located at Khatian No. 294, Plot No. 226, Mouza - Bhiringi, Bhurdwan Dist, Durgapur, West Bengal.
- » 2&3 Bedroom Flats Available
- » Clear title land and.
- » Full Ground Water
- » All flats are aesthetically designed with 100% as per vastu
- » Schools, Markets, Colleges, Temples & Various Public Amenities are within easy reach.





• Durgapur Steel Plant



• Durgapur Barrage







# WELFARE COMPLEX

## AURANGABAD - BIHAR

Aurangabad is a city and a Municipality in Aurangabad District,, in the state of Bihar. It is situated on the grand trunk road.

Aurangabad is one of the 38 Districts of Bihar, It has two sub divisions Aurangabad and Daud Nagar.

Aurangabad got its name from one of the kings of the Mughal dynasty, Aurangzeb.



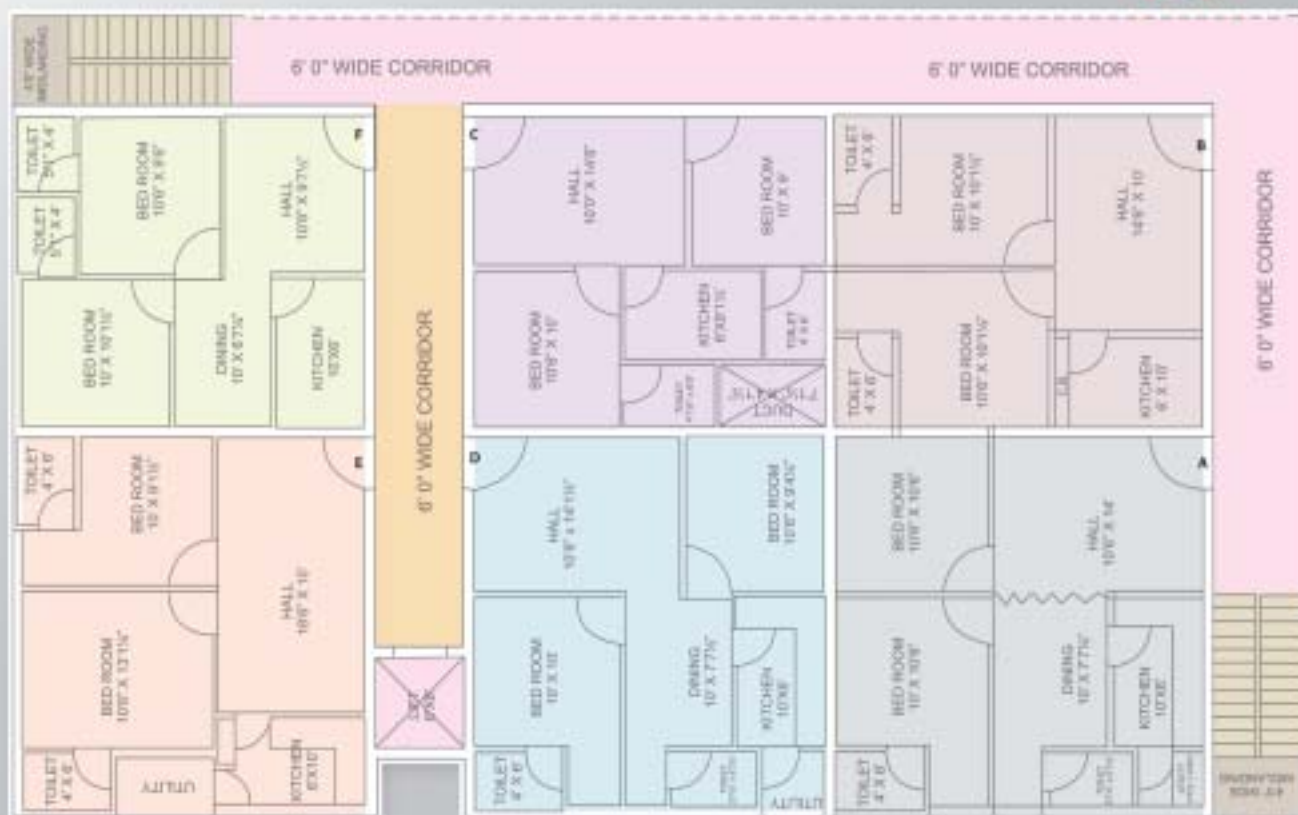
## HIGHLIGHTS

- » The project located at Khatian No. 24 & 464, Plot No. 119, 124 & 162, Ramesh Chowk, Aurangabad, Bihar.
- » 2 Bed Room Flats available.
- » Clear title land and Immediate Registration.
- » Full ground water.
- » Near Zillaparishat Office.
- » All flats are aesthetically designed with 100% as per vaastu.
- » Schools, Markets, Colleges, Temples & Various Public Amenities are within easy reach.





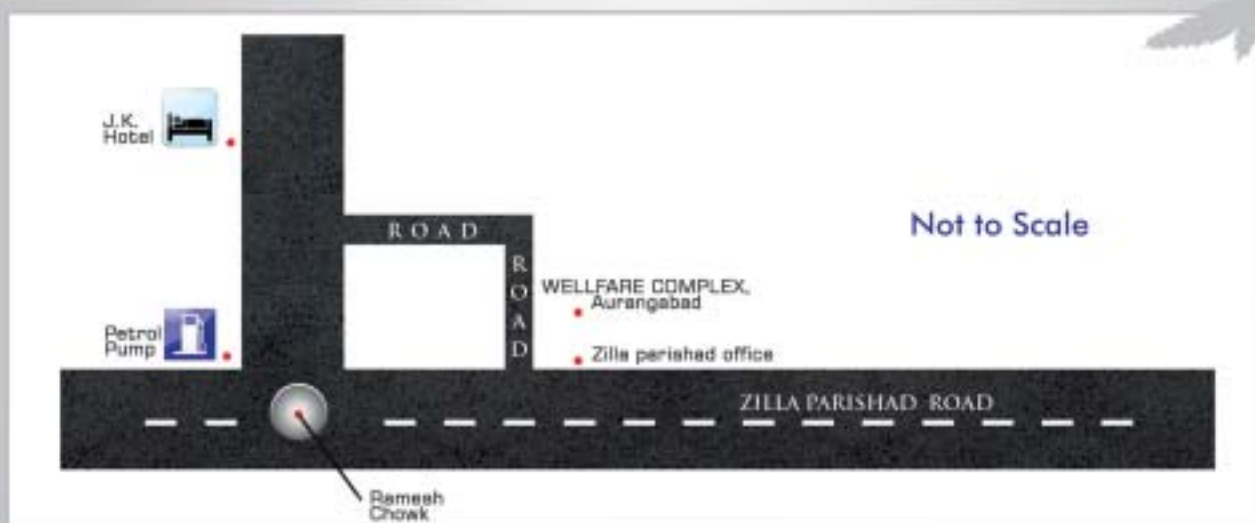
## Typical Floor Plan



Flat No.	Flat Area
A	815 sft
B	700 sft
C	660 sft
D	780 sft
E	780 sft
F	660 sft



## Location Plan







REAL  
ESTATE  
PROJECT

# WELFARE TOWNSHIP

## SASARAM, BIHAR



highlights

Sasaram is the Dist. Head Quarter in Bihar with Historic prominence.  
Emperor of ancient India - Shersha Suri's tomb exists here which results in flow of tourists.

Grand Trunk Road or G.T. Road in brief was laid by the same emperor which connects Peshwar in Pakistan and Kolkata in India. And our Sasaram is located on the same Historic Road,

The divine blessings of Goddess Satchandi Maa is the true source of strength of Sasaram and it is marching ahead at constant pace towards more developments, Un - doubtedly, a wonderful place for comfortable and permanent living.

- The project located at Katha No.3(old) / 24 New, Plot No.s 472,478,480,481 etc.,
- 3 and 5 Decimal plots available
- Clear title land and immediate Registration.
- Located on G.T.Road
- Very near to D.A.V. School
- Tree Guards & Roads.
- Full Ground Water
- 10 Min. drive from Bus Stand and Shersha Tomb.
- Sasarm Rly. Station is located nearby.



## Layout Plan



• Sher Shah Suri's Tomb, Sasaram

WELLFARE TOWNSHIP, Sasaram, Bihar:

### AREA STATEMENT

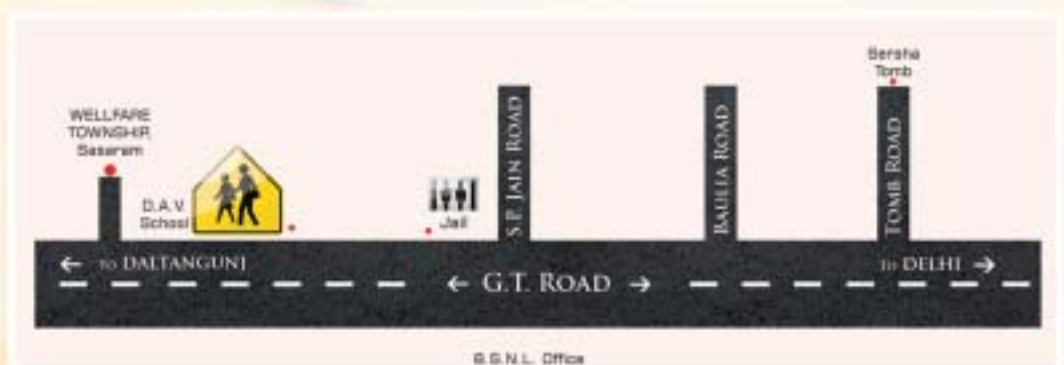
PLOT SIZE	PLOT NOS	NO. OF PLOTS
36'0" x 60'0" (5 Decimals)	1 to 29	29
30'0" x 45'0" (3 Decimals)	30 to 83,	54



• Sasaram Railway Station

## Location Plan

Not to scale



B. G. N. L. Office





## WELLFARE TOWNSHIP

**GADAG**  
KARNATAKA

Gadag is a town and a city municipal council in Gadag district in the state of Karnataka, India.

The twin city municipality is situated 80 km from Dharwad and 60 km from Hubli, and lies on the Gutti - Vasco National High Way.

Due to its strategic is optimum of Gadag is optimum. Where people love to live for a life time.

Plenty of Ground Water.

Clear Title Land.

Forthcoming Colonies around the site

- » The project is located in R.S. No. 871+871/B at manvi chawl, Betageri, Gadag, Karnataka
- » Plots available in Multiples of 40'x72' (6.66 Cents), 40'x36' (3.33 Cents), 40'x54' (5.00 Cents).
- » Well Developed Area.
- » Wonderful Environment.
- » Roads & Drains shall be provided.
- » Tree Guards.

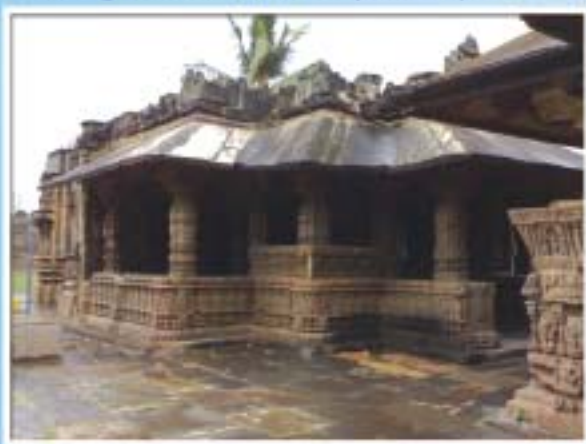
# HIGHLIGHTS



## Layout Plan



• Gadag Trikuteshwara Temple Complex



• A clean view of Gadag Railway Station

### Location Plan



Not to Scale





# WELLFARE TOWNSHIP

## HAVERI - KARNATAKA

Haveri is a city in Karnataka, a state of southern India. It is the administrative head quarters of Haveri Dist. The name Haveri is derived from the Kannada words have and keri, which means place of snakes.

Haveri is famous for its cardamom garlands.

It is said that Haveri had around 1000 maths (Sacred religious places) in ancient days.

One of the famous maths is Hukkeri Math. Haveri is also Kaginele which is the birth place of the poet Kanakadasa.

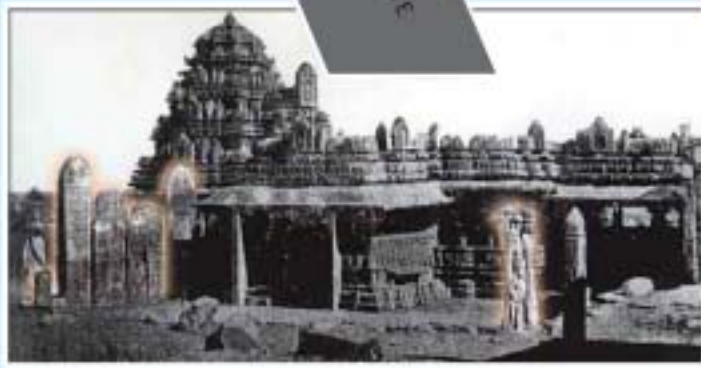
Haveri is 7 hours away from Bangalore by train. It is the stop 72 KM before Hubli and 72 KM after Davangere. By road, it is about 340 KM from Bangalore on NH-4 towards Mumbai.

## HIGHLIGHTS

- » The project is located in Survey No's 207, 210 part at Devagiri village, taluk & Dist, Haveri, Karnataka
- » Wonderful site with clear title and ready for immediate registration.
- » Surrounded by Colleges and developed residential colonies.
- » 40 Ft. and 30 Ft. Roads will be laid. 1 common bore well will be provided.
- » Tree Guards on both sides of the road.
- » Landscape Garden & Children play area.



# LAYOUT PLAN



. Ancient Temple Complex



. Haveri district festival of Pongal

# LOCATION PLAN







REAL  
ESTATE  
PROJECT

# WELFARE TOWNSHIP

KOLHAPUR - MAHARASHTRA

Kolhapur is an ancient city, famous for its food, headwear, footwear, jewellery, wrestling and religious connections. According to legend it was settled by Kolhapur, a demon who was later Killed by Mahalakshmi to relieve the local populace. However, honouring the demon's dying wish, the city was named after him. Kolhapur finds mentions in Devi Gita, the final and most important chapter of the Srimad Devi Bhagawatam, as one the important places of Shkti worship, Here the Devi Laksmi always dwells....

## highlights

- The project located at R.S. No. 846 & 2595, Kasaba Bawada, Karvir - Sub Dist., & Taluk, Kolhapur, Maharashtra.
- Wonderful Site with clear title and ready for immediate registration.
- Just 3 k.m. from Central Railway & Bus Station.
- Surrounded by Colleges and Developed Residential colonies.
- 40 Ft. and 30 Ft . Roads will be laid.
- 1 common bore well will be provided.
- Tree Guards on both sides of the road.
- Landscape Garden & Children play area.



## Layout Plan



Wings	Plot Size	Plot Area	Colour	No. of Plots	
A Wing	29' x 24'.6"	710 sft		A1 to A174	
B Wing	27' x 35'	945 sft		B1 to B71	Tentative
C Wing	-----	1200 sft		C1 to C42	Tentative

. The famous God Kolhapur mahalxmi



. Kolhapur New Palace



## LOCATION PLAN







#### REAL ESTATE PROJECT

# WELFARE TOWNSHIP PANDHARPUR MAHARASHTRA

- ▶ The Project located at GUT No. 172/11D, Mouje; Kasegaon, Pandharpur Taluka, Solapur District.
- ▶ Plot size 15 mts.x 18mts = 270 mts available & Different Sizes.
- ▶ Clear title land and immediate Registration.
- ▶ Tree Guards & Roads.
- ▶ Full Ground Water
- ▶ Maximum 3 km drive from Bus Stand
- ▶ Surrounded by existing Housing Colonies.

The location is part of the prime area in the fast developing and expanding pandharpur city. Merely 3km away from CBS. The city is blessed by Lord Vithal and the temple is also at a close distance.

The plots are well equipped with central distribution network of underground telephone lines, power lines and assuring non-stop supply through out the year.

## HIGHLIGHTS



## Layout Plan



Iskcon Temple

	NO. OF PLOT	BREADTH	AREA SQ. M. / PLOT	TOTAL AREA SQ. M.	AREA SQ. FT. / PLOT	TOTAL AREA SQ. FT.
A	A1	21.85	15.00	327.72	3526.26	3526.26
	A2	19.77	15.00	296.61	3194.75	3194.75
	A3	17.72	15.00	266.10	2863.24	2863.24
	A4	15.67	15.00	235.29	2531.72	2531.72
	A5	13.28	20.64	270.86	2914.45	2914.45
	A5	18.00	20.64	371.50	3997.34	3997.34
	A7	18.00	15.65	275.83	2967.93	2967.93
	A8	18.00	15.00	275.83	2967.93	2967.93
	A9	18.00	16.30	287.50	3093.50	3093.50
	A10	14.00	11.00	157.75	1697.39	1697.39
	A11	12.85	12.00	151.00	1624.76	1624.76
	A12	14.15	11.35	167.13	1798.32	1798.32
	A13	14.15	11.46	132.17	1744.95	1744.95
	A14	13.57	13.18	178.86	1924.53	1924.53
B	B1 TO B9	15.00	18.00	270.00	2430.00	2905.20
C	C1 TO C6	14.00	12.00	168.00	1008.00	1807.68
D	D1 TO D6	12.85	12.00	154.20	925.25	1659.19
E	E1 TO E6	12.00	12.00	144.00	2880.00	1549.44
F	F1 TO F6	13.57	12.00	162.84	651.36	1752.15
G	G1 & G2	18.00	21.50	387.00	774.00	4164.12
H	H1 TO H5	12.00	13.18	158.16	790.80	1701.80
Total	66 No.s				12883.35	138630.22

## Site Plan

Not to scale





# wellfare Resorts

Bheemili Beach, Visakhapatnam

Spread Across the sprawling green fields of the picturesque Bheemili suburbs of neighboring Vizag is shopping-up "Wellfare Resorts".

The location is so unique and the design is so elegant that a member will feel like spending a life time while the gentle breeze through the Bay of Bengal pampers one's soul.

This project strengthens the core business concept of Wellfare Farms & Resorts wing.





# WELLFARE Resorts



*Ooty*  
Tamilnadu

## LIFE IS A JOURNEY.

It needs tiny little breaks in between for a smooth sail. Hence comes the resorts concept, which is catching up very fast across the globe.

To capitalize on such a concept - Wellfare owned a huge resort at the famous hill station of India - Ooty.

Wellfare offers flesible time share options for affordable holidays at dream destinations. Ooty is the prime location among many that are coming up.



The Valley of Ooty - Breathtaking





# **WELLFARE** *Resorts*

## **SHIRDI** - Maharashtra

Sabka Malik EK - Shri Shirdi Sai Baba preached while spreading the light of happiness & humanity his miraculous touch healed the toughest of ailments and the oodli he disbursed is as divine as the lord himself. Shirdi is a pilgrimage centre where devotees pour in millions every month. And hence a right place so aptly identified by Wellfare to showcase their resorts concept. Time share option is the strong piont of this unique business propositions aimed at the common man.



SRI SHIRDI SAI BABA



The Holy Shrine of  
Shirdi Sai Baba





# wellfare

# Farms

PULIVENDHULA, ANDHRAPRADESH

In the land of a great leader of Andhra Pradesh Late Dr. Y.S. Rajasekhhar Reddy, here comes an iconic farm lands project - "Welfare Farms" at Pulivendula. The Late leader's concern to uplift farming in the state is an inspiring aspect for the Management of Welfare and to reinforce its core business. Incentive the project is conceived & promoted.

Taking into Confederation the geographic conditions, suitable crop with commercial value shall be grown on every bit of farm land in this project. Along with the value of the land the crop yield too will add up to the network of member's investment.





# wellfare

# Farms

KUSULWADA, VISAKHAPATNAM

Yet another core concept of Wellfare is developing & sales of farm lands. And here comes a landmark project in Visakhapatnam at a location the nature too. Gets envious about.

"Wellfare Farms" at Kululuwada of Vizag is a unique fare land project that ensures yield through first bearing plantations and commercial crops - which are grown and maintained by professional horticulturists.

Hence, every investment made in any of Wellfare Farm Lands appreciates manifold confirming huge returns.







# HOTEL **WELFARE** marina

*.. affordable Luxury Hotel*

Welfare is making an impact in the Hospitality Industry with the opening of its prestigious venture - Hotel Welfare Marina. True to its catch live - it's an affordable luxury hotel with all futures and facilities a tourist or a business executive look for.

Absolutely located in the Heart of the City of Destiny - Hotel Welfare Marina is a second hence for a traveler.

- W1 - F1 Internet
- LED TV's
- Travel Desk
- Split A.C.'s
- 24 Hrs. Room Service
- Direct dialing phones



(A unit of WELFARE Group of Companies)  
Opp.DRM Office, Station Road, Visakhapatnam -16  
Andhra Pradesh, India

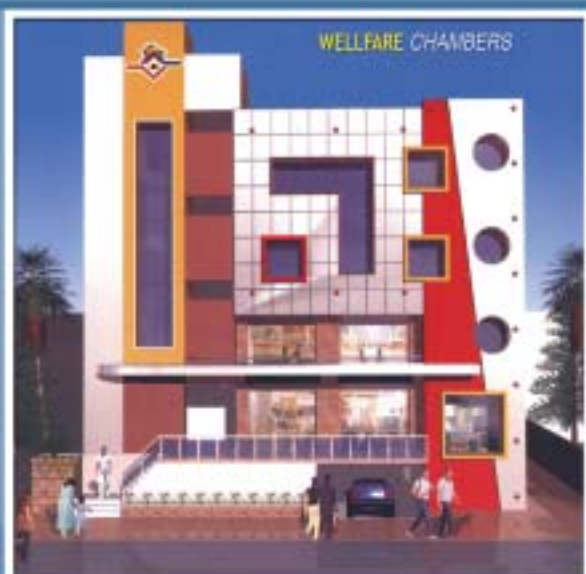


# OWN COMMERCIAL COMPLEXES

• PHOTO GALLERY



Head Office: Asilmetta, Visakhapatnam



Welfare Chambers : Hyderabad



Welfare Complex: Dwarakanagar, VSP



Welfare Complex: S'Dhara, VSP



Welfare Bhavan: East point colony, VSP



Welfare Complex: Aurangabad, Bihar



Mind Studio, Visakhapatnam



Eastern Mall Welfare:  
3rd & 4th Floor, Ranchi, Jharkhand



# OWN OFFICE PREMISES

PHOTO GALLERY



. Adra



. Aurangabad



. Dhanbad



. Welfare Holiday World



. Hyderabad



. Jamshedpur



. Rajahmundry



. Ranchi



. Publications - vision





# IMMEDIATE LAUNCH OF

## RESIDENTIAL & COMMERCIAL VENTURES

**WELFARE  
CONSTRUCTION  
PROJECTS**

<b>Commercial Complex</b>	Andhra Pradesh	Banjara Hills-Hyderabad, Sriharipuram-Gajuwaka-Vsp Jagadamba Jn.-Vsp, Srikakulam-1, Srikakulam-2
	West Bengal	Kharagpur
<b>Residential Apartment</b>	Andhra Pradesh	Rajahmundry, Khammam, Chelakalurpeta, Ongole, M.V.P Colony-Vsp, Krishna College-Maddilapalem, Pendurthy-I, Pendurthy-II, Pendurthy-III, Vsp, Srikakulam, Poranki-Vijayawada, Tuni-Vsp, Shankarpally-Hyd,
<b>Welfare Nivas</b>	West Bengal	Purulia
<b>Welfare Enclave</b>	Andhra Pradesh	Kapparada-Muralinagar-Vsp
<b>Residential Group House</b>	Andhra Pradesh	Eluru, Kavli, Nellore
<b>Residential Apartment</b>	Andhra Pradesh	Hyderabad
<b>Residential Apartment</b>	Odisha	Rourkela
<b>Residential Apartment</b>	Jharkhand	Chaibasa - 2
<b>Welfare Raj Mahal</b>	Rajasthan	Jaipur
<b>Residential Apartment</b>	Karnataka	Sarjapura, Hubli, Bangalore





# IMMEDIATE LAUNCH OF *TOWNSHIP VENTURES*



## 『ANDHRA PRADESH』

Isnapur-Hyd-1, Muthangi-Hyd-2, Kondapur-Hyd-3,  
Maheswaram-Hyd-4, Pulimamidi-Hyd-5, Sompeta, Tekkali, S.kota  
Pithapuram, Repalli, Vanazangi-Srikakulam-1, Sanapalavanipeta - Srikakulam-2,  
Nizamabad, Machilipatnam, Kurnool, Venkatachalam - Nellore-2,  
Vijayawada, Pamuru, Amacharla - Nellore-3,  
Somarajapalem-Singarayakonda-1, Kanumulla-Singaraikonda-2,  
Guduru,Venkatagiri, Naidupeta, Renigunta-Tirupathi-1, Vikruthimala- Tirupathi-2,  
Paradesipalem-Vsp, Peddipalem-Vsp, Rushikonda-Vsp, Majjivalasa-Vsp,  
Nellimarla - Vizianagaram, Despatrunipalem-Vsp, Bakkanna Palem-Vsp,  
Vadlapudi-Vsp, Paravada-Vsp, Jaggampeta-E.G.Dist-A.P.

BIHAR	ODISHA	JHARKAND
Aurangabad-2 Gaya. Sherghati, Rafgunj	Bhadrak, Balasore, Baripada-2 Malkangiri.	Adityapur - JSR, Dhanbad CHakradharpur

WEST BENGAL	KARNATAKA
Purulia, Jhalda	Bellary,Hospet,Koppal, Hubli,Mandya, Bangalore, Siriguppa, Raichur,Manvi







# WELFARE Pledge

Welfare is my destiny.

Welfare is my Family.

Welfare is my present  
and my glorious future aswell.

I solemnly affirm that I will dedicate myself  
to up-keep the dignity of Welfare Group  
with total commitment.

I take pledge that  
I will not mis-appropriate  
the conferred upon rights  
and I will discharge my duties  
and responsibilities  
with strong conviction  
-till my last breath.







the projects  
strength  
of  
Wellfare  
is  
touching  
an  
alltime high..



the  
*vibrant*  
colours  
*of progression*



**WELFARE**  
**GROUP OF COMPANIES**  
AN ISO 9001-2008 CERTIFIED COMPANY

Regd. No.163595

- ▶ BUILDINGS
- ▶ ESTATES
- ▶ FARMS
- ▶ RESORTS
- ▶ HOTELS
- ▶ HOLIDAYS
- ▶ PUBLICATIONS
- ▶ CREATIONS
- ▶ EDUCATIONAL INSTITUTIONS
- ▶ GLOBAL PLACEMENTS

**CHARITABLE TRUST**



Concept : GSK ANAND@94917 68699 (www.vizagnimbus.com)

**REGD. OFFICE:** 126/1, Rabindrapally,  
P.O. & P.S.: Khardah, North-24 Paraganas, Kolkata-700 117.  
Ph: 033-25838634

**CORPORATE OFFICE:** 10-5-2/1/A Wellfare Chambers,  
Near Balaji Grand Bazar, Banjara Hills  
Rd. No: 1, Musab Tank, Hyderabad - 500023.  
Ph No: 040-23310284

**HEAD OFFICE:** 10-1-13/1, 2, 3 Wellfare Complex,  
Near R.T.C. Complex, Asilmetta, Visakhapatnam - 530 003.  
Ph: 0891-2858585, 2534584, 3095687. Fax: 0891-2562443.  
Website: www.welfaregroup.com, E-mail: info@welfaregroup.com

**WELFARE FOR YOUR WELFARE**